

The Jockey Club CPS Limited

Central Police Station Conservation
and Revitalisation Project:
66th Monthly EM&A Report
(1 April to 30 April 2017)

Issue Date: May 2017

Environmental Resources Management

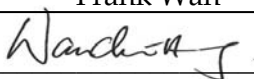
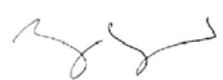
16/F Berkshire House
25 Westlands Road
Quarry Bay, Hong Kong
Telephone: (852) 2271 3000
Facsimile: (852) 2723 5660
E-mail: post.hk@erm.com
<http://www.erm.com>

The Jockey Club CPS Limited

Central Police Station Conservation
and Revitalisation Project:
66th Monthly EM&A Report
(From 1 April to 30 April 2017)

Issue Date: May 2017

Reference 0095646

For and on behalf of ERM-Hong Kong, Limited	
Approved by:	Frank Wan
Signed:	
Position:	Partner
Certified by:	
	(Environmental Team Leader - Katie Yu)
Date:	10 May 2017

This report has been prepared by ERM-Hong Kong, Limited with all reasonable skill, care and diligence within the terms of the Contract with the client, incorporating our General Terms and Conditions of Business and taking account of the resources devoted to it by agreement with the client.

We disclaim any responsibility to the client and others in respect of any matters outside the scope of the above.

This report is confidential to the client and we accept no responsibility of whatsoever nature to third parties to whom this report, or any part thereof, is made known. Any such party relies on the report at their own risk.

Your ref. 0095646_let_Atkins_20170512 Monthly EM&A Report No.66.doc
Our ref. 5121189/17.20/OC121/KC/EK

Date: 12 May 2017

Telephone (852) 2972 1000
Facsimile (852) 2890 6343

info.hk@atkinsglobal.com
www.atkinsglobal.com

By Post and Email (katie.yu@erm.com)

ERM-Hong Kong Limited,
16/F Berkshire House,
25 Westlands Road,
Quarry Bay,
Hong Kong

Attn: Ms Katie Yu

Dear Katie,

**Central Police Station Conservation and Revitalization Project
Verification of Monthly EM&A Report No. 66**

We refer to your letter dated 12 May 2017 regarding the Monthly EM&A Report No. 66. Atkins China Limited verifies, in the capacity of Independent Environmental Checker, that the report conforms the requirements provided in Condition 3.4 of the Environmental Permit (EP-408/2011/C).

**Yours sincerely,
For Atkins China Limited**



**Keith Chau
Independent Environmental Checker**

c.c. HKJC – Mr. Kenneth Lee (By Email)
Rocco Design Architect – Mr. Charles Kung (By Email)

CONTENTS

1	INTRODUCTION	1
1.1	PURPOSE OF THE REPORT	1
1.2	STRUCTURE OF THE REPORT	1
2	PROJECT INFORMATION	3
2.1	BACKGROUND	3
2.2	SITE DESCRIPTION	3
2.3	CONSTRUCTION ACTIVITIES	3
2.4	PROJECT ORGANISATION	4
2.5	STATUS OF ENVIRONMENTAL APPROVAL DOCUMENTS	4
3	ENVIRONMENTAL MONITORING REQUIREMENTS	6
3.1	NOISE MONITORING	6
3.1.1	Monitoring Location	6
3.1.2	Monitoring Parameters, Frequency and Programme	6
3.1.3	Monitoring Equipment and Methodology	6
3.1.4	Event / Action Plan	7
3.1.5	Mitigation Measures	7
3.2	CULTURAL HERITAGE	8
3.2.1	Vibration Monitoring	8
3.2.2	Mitigation Measures	9
3.3	LANDSCAPE AND VISUAL MONITORING	9
3.3.1	Mitigation Measures	9
3.4	ENVIRONMENTAL REQUIREMENTS IN CONTRACT DOCUMENTS	9
4	IMPLEMENTATION STATUS ON ENVIRONMENTAL PROTECTION REQUIREMENTS	10
5	MONITORING RESULTS	11
5.1	NOISE	11
5.2	CULTURAL HERITAGE	11
5.2.1	Vibration Monitoring	11
5.2.2	Heritage Site Audit	11
5.3	LANDSCAPE AND VISUAL	12
5.4	WASTE MANAGEMENT	13
6	ENVIRONMENTAL SITE INSPECTION	15
7	ENVIRONMENTAL NON-CONFORMANCE	16
7.1	SUMMARY OF MONITORING EXCEEDANCE	16
7.2	SUMMARY OF ENQUIRY	16
7.3	SUMMARY OF ENVIRONMENTAL NON-COMPLIANCE	16
7.4	SUMMARY OF ENVIRONMENTAL COMPLAINT	16

7.5	<i>SUMMARY OF ENVIRONMENTAL SUMMONS AND SUCCESSFUL PROSECUTION</i>	16
8	<i>FUTURE KEY ISSUES</i>	17
8.1	<i>KEY ISSUES FOR THE COMING MONTH</i>	17
8.2	<i>MONITORING SCHEDULE FOR THE NEXT MONTH</i>	17
8.3	<i>CONSTRUCTION PROGRAMME FOR THE NEXT MONTH</i>	17
9	<i>CONCLUSIONS</i>	18

LIST OF TABLES

Table 2.1	Summary of Construction Activities Undertaken from 1 to 30 April 2017
Table 2.2	Summary of Environmental Licensing, Notification and Permit Status
Table 3.1	Construction Phase Noise Monitoring Station
Table 3.2	Noise Monitoring Equipment
Table 3.3	Action and Limit Levels for Construction Noise Monitoring
Table 3.4	Alert, Alarm and Action (AAA) Levels for Vibration Monitoring
Table 3.5	Event and Action Plan for Vibration Monitoring
Table 4.1	Status of Required Submissions
Table 5.1	Findings of Monthly Tree Inspection in the Reporting Period
Table 5.2	Quantities of Waste Generated from the Project
Table 8.1	Construction Works to be Undertaken in the Coming Month

LIST OF ANNEXES

Annex A	Locations of Works Areas and the Surroundings
<i>Annex A1</i>	<i>Project Location</i>
<i>Annex A2</i>	<i>Declared Monuments within the Project Site</i>
<i>Annex A3</i>	<i>Site Layout Plan marked with Works</i>
Annex B	Project Organization Chart and Contact Detail
Annex C	Locations of Noise Monitoring Stations and Noise Sensitive Receivers
Annex D	Monitoring Schedule of the Reporting Month and the Next Month
Annex E	Calibration Reports for Calibrators and Sound Level Meters
Annex F	Event/Action Plans for Noise
Annex G	Summary of Implementation Status
Annex H	Noise Monitoring Results
Annex I	Construction Programme for the Project
Annex J	Tree Inspection Reports
Annex K	Environmental Complaint, Environmental Summons and Prosecution Log

Annex L Records of Vibration Monitoring for Other Construction Works

EXECUTIVE SUMMARY

The construction works of **Central Police Station Conservation and Revitalisation Project** commenced on 24 October 2011. This is the 66th monthly Environmental Monitoring and Audit (EM&A) report presenting the EM&A works carried out during the period from 1 to 30 April 2017 in accordance with the EM&A Manual.

Summary of Construction Works undertaken during Reporting Period

The major construction works undertaken during the reporting period include:

- Hard landscape construction;
- Timber elements repair and replacement at Blocks 3, 6, 7, 9 and 14;
- Fitting out works at Blocks 1, 3, 6, 7, 9, 11, 14, 15, 17, Arbuthnot Wing and Old Bailey Wing;
- Metal works repair at Blocks 1, 3, 8, 9, 15, 17 and 19;
- External façade repair at Blocks 3, 8, 9, 10, 11, 13, 14 and 17;
- E&M fixing at Blocks 1, 3, 6, 7, 9, 12, 13, 14, 15, Arbuthnot Wing and Old Bailey Wing;
- Footbridge construction; and
- Old Bailey Street staircase construction.

Environmental Monitoring and Audit Progress

A summary of the monitoring activities in this reporting period is listed below:

- | | |
|---|----------|
| • Construction noise monitoring during normal weekdays at each monitoring station | 6 times |
| • Joint environmental site inspection | 1 time |
| • Heritage site inspections | 21 times |
| • Landscape & visual monitoring | 1 time |
| • Tree inspection | 1 time |
| • Vibration monitoring for other construction works | 21 times |

Noise

6 sets of 30-minute construction noise measurements were carried out at each of the monitoring stations (NM2 and NM6) during normal weekdays of the reporting period. No exceedance of the Action or Limit Level of construction noise was recorded during the reporting period.

Cultural Heritage

No vibration monitoring was carried out for demolition works, trial piling or pile/bored piling works as the aforementioned works were not conducted during the reporting period.

Vibration monitoring carried out for other construction works during the reporting period are listed below:

- 21 vibration monitoring measurements for the structural addition and alteration works at Block 11.

No exceedance of the Alert, Alarm and Action Levels was recorded during the reporting period.

Heritage site audits were conducted on every working weekday in April 2017 by the Heritage Checker during the reporting period.

Major observations and recommendations during the site inspections were listed below:

4 April 2017

- External paint at south elevation of Block 10 was observed defective. The Contractor was reminded to follow up and rectify the defective paint.

27 April 2017

- A historic hopper was observed damaged due to improper storage. The Contractor was reminded to follow up and improve supervision in handling historic building fabric.
- It was observed that the protection to painted sign at Block 12 was missing. The Contractor was reminded to follow up and provide sufficient protection to the painted sign.

28 April 2017

- Skirting of wrong profile was observed to be installed incorrectly in Block 3 room 03/T/02. The Contractor was reminded to rectify the incorrect installation.
- It was observed that the wall and door frame was damaged on ground floor at Block 14. The Contractor was reminded to follow up and provide sufficient supervision.
- Damage to the existing timber joints supporting the timber floor at Block 7 was observed. The Contractor was reminded to follow up.

- It was observed that the protection to painted sign at Block 9 lower ground floor was missing. The Contractor was reminded to follow up and provide sufficient protection to the painted sign.
- It was observed that the protection to terrazzo floor at Block 14 first floor was missing. The Contractor was reminded to follow up and provide sufficient protection.

The Contractor was urged to follow-up the necessary rectification based on the inspection findings.

Landscape & Visual

Landscape and visual monitoring has commenced since October 2011 on a monthly basis. The tree inspection was conducted on 7 April 2017 by the arborist during the reporting period. The Contractor was recommended to closely monitor the growth of Tree 5 in coming months due to backfilling of new topsoil in December 2016. Withered leaves were observed on Tree 11 and at the planter. Renovation works were observed being carried out near Tree 11 with working platform set up adjacent to the tree. The Contractor has provided a temporary shelter for the protection of Tree 11 during the nearby renovation works. The Contractor should closely monitor the growth of Tree 11.

Waste Management

Wastes generated from this Project include inert construction and demolition (C&D) materials and non-inert C&D materials. A total of 32.19 tonnes of inert C&D materials were generated during the reporting period. 103.21 tonnes of non-inert C&D materials comprising general refuse and mixed construction waste were generated during the reporting period. No metal, paper/cardboard packaging or plastic waste was recycled during the reporting period. No chemical waste was collected by licenced chemical waste collector during the reporting period.

Environmental Site Inspection

A joint environmental site inspection was carried out by the representatives of the Contractor, the IEC and the ET on 20 April 2017. No major observations and recommendations were recorded during the environmental site inspection.

Environmental Exceedance/Non-conformance/Compliant/Summons and Prosecution

No exceedance of the Action or Limit Level of construction noise was recorded at designated monitoring stations during the reporting period.

No exceedance of the Alert, Alarm and Action Levels of vibration was recorded during the reporting period.

No enquiry was received during the reporting period.

No environmental non-compliance event was recorded during the reporting period. No non-compliance report related to the character defining elements, historic buildings and structures was issued during the reporting period.

No complaint was received during the reporting period.

No summons/prosecution was received during the reporting period.

Future Key Issues

Work items to be undertaken in the next month include:

- Hard landscape construction;
- Timber elements repair and replacement at Blocks 3, 6, 7, 9 and 14;
- Fitting out works at Blocks 1, 3, 6, 7, 9, 11, 13, 14, 15, 17, Arbuthnot Wing and Old Bailey Wing;
- Metal works installation at Blocks 1, 3, 8, 9, 14 and 15;
- External façade repair at Blocks 3, 8, 9, 10, 11, 12, 13, 14 and 17;
- E&M fixing at Blocks 1, 3, 6, 7, 9, 13, 14, 15, Arbuthnot Wing and Old Bailey Wing;
- Footbridge construction; and
- Old Bailey Street staircase construction.

Potential environmental impacts arising from the above construction activities are mainly associated with dust, construction noise, site runoff and waste management.

ERM-Hong Kong, Limited (ERM) was appointed by the Jockey Club CPS Limited (the CPS Ltd) as the Environmental Team (ET) to undertake the Environmental Monitoring and Audit (EM&A) programme for the **Central Police Station Conservation and Revitalisation Project** (the Project).

1.1 *PURPOSE OF THE REPORT*

This is the 66th EM&A report which summarises the impact monitoring results and audit findings for the EM&A programme during the reporting period from **1 to 30 April 2017**.

1.2 *STRUCTURE OF THE REPORT*

The structure of the report is as follows:

Section 1 : **Introduction**

details the scope and structure of the report.

Section 2 : **Project Information**

summarises background and scope of the Project, site description, project organization and contact details, construction programme, the construction works undertaken and the status of Environmental Permit(s)/License(s) during the reporting period.

Section 3 : **Environmental Monitoring Requirements**

summarises the monitoring parameters, monitoring programmes, monitoring methodologies, monitoring frequency, monitoring locations, Action and Limit Levels, Event/ Action Plans, environmental mitigation measures as recommended in the EIA report and relevant environmental requirements.

Section 4 : **Implementation Status on Environmental Protection Requirements**

summarises the implementation of environmental protection measures during the reporting period.

Section 5 : **Monitoring Results**

summarises the monitoring results obtained in the reporting period.

Section 6 : **Environmental Site Inspection**

summarises the audit findings of the site inspections undertaken within the reporting period.

Section 7 : **Environmental Non-conformance**

summarises any monitoring exceedance, environmental complaints and environmental summons within the reporting period.

Section 8 : **Future Key Issues**

summarises the impact forecast and monitoring schedule for the next reporting month.

Section 9 : **Conclusions**

2.1 BACKGROUND

The Chief Executive (CE)'s 2007-2008 Policy Address highlighted revitalisation as the guiding principle of heritage conservation and the Project was one of the specific proposals put forward by the CE in the same Policy Address. At the meeting of the Executive Council (ExCo) on 15 July 2008, the ExCo advised and the CE ordered that Government should enter into a partnership with the Hong Kong Jockey Club (HKJC) in the form of an agreement (or agreements) to take forward the conservation and revitalisation of the CPS project based on various guiding parameters. The Project is now being undertaken in partnership with the Development Bureau of the HKSAR Government. The HKJC has taken on board the decision at the ExCo meeting and further investigated the design and implementation of the Project. The Project is now implemented by the Jockey Club CPS Limited.

2.2 SITE DESCRIPTION

The location of the Project Site is shown in *Annex A1*. The Site is bounded by Hollywood Road to the north, Arbuthnot Road to the east, Chancery Lane to the south and Old Bailey Street to the west.

The Site comprises three Declared Monuments designated under the *Antiquities and Monuments Ordinance* in 1995. They are:

- Central Police Station;
- Former Central Magistracy; and
- Victoria Prison Compound.

They are collectively named the Central Police Station (CPS). *Annex A2* shows the location of the Declared Monuments within CPS and the buildings within the CPS.

2.3 CONSTRUCTION ACTIVITIES

A summary of the major construction activities undertaken in this reporting period is shown in *Table 2.1* and illustrated in *Annex A3*.

Table 2.1 **Summary of Construction Activities Undertaken from 1 to 30 April 2017**

Construction Activities Undertaken
<ul style="list-style-type: none">• Hard landscape construction;• Timber elements repair and replacement at Blocks, 3, 6, 7, 9 and 14;• Fitting out works at Blocks 1, 3, 6, 7, 9, 11, 14, 15, 17, Arbuthnot Wing and Old Bailey Wing;• Metal works repair at Blocks 1, 3, 8, 9, 15, 17 and 19;• External façade repair at Blocks 3, 8, 9, 10, 11, 13, 14 and 17;• E&M fixing at Blocks 1, 3, 6, 7, 9, 12, 13, 14, 15, Arbuthnot Wing and Old Bailey Wing;• Footbridge construction; and• Old Bailey Street staircase construction.

2.4 **PROJECT ORGANISATION**

The Project organisation chart and contact details are shown in *Annex B*.

2.5 **STATUS OF ENVIRONMENTAL APPROVAL DOCUMENTS**

A summary of the valid permits, licences, and/or notifications on environmental protection for this Project in the reporting period is presented in *Table 2.2*.

Table 2.2 Summary of Environmental Licensing, Notification and Permit Status

Permit/ Licences/ Notification	Reference	Validity Period	Remarks
Environmental Permit (EP)	EP-408/2011/C	Throughout the Contract	Permit granted on 29 April 2016
Notification of Construction Works as required under <i>Air Pollution Control (Construction Dust) Regulation</i>	Ref. No. 332920	Throughout the Contract	-
Registration of Chemical Waste Producer under <i>Waste Disposal Ordinance</i>	Chemical Waste Producer No.: 5213-122-G2347-25	Throughout the Contract	-
Disposal of C&D material/waste	Billing Account Number: 7013338	Throughout the Contract	-
Effluent Discharge License under <i>Water Pollution Control Ordinance</i>	License No. WT00026824-2017	11 Jan 2017 – 31 Oct 2021	The renewed licence was issued on 11 January 2017
Notification of Commencement of Asbestos Abatement Work under <i>Air Pollution Control Ordinance</i>	-	Throughout the Contract	EPD's letter (EPD's ref.: (5) in EPAC/A/4/000/23 3 II) dated 2 December 2011 satisfied that the content of the asbestos abatement plan (Report No.: 0210/11/ED/0078A) is in accordance with the APCO
Approval of Asbestos Abatement Work (Phase 2)	-	Earliest commencement date on 26 January 2012	EPD's letter (EPD's ref.:() in EPAC/A/4/000/23 3) dated 18 January 2012.
Construction Noise Permit (CNP)	GW-RS1270-16	15 December 2016 at 0000 hours to 11 June 2017 at 2400 hours	-

3.1 NOISE MONITORING

3.1.1 Monitoring Location

The construction noise monitoring locations are listed in *Table 3.1* and are shown in *Annex C*.

Table 3.1 Construction Phase Noise Monitoring Station

Monitoring Location	Proposed Construction Noise Monitoring Station			
	ID in EM&A Manual	ID	Type of Measurement	Remark
Rooftop of Ho Fook Building	N2	NM2	Façade	-
Rooftop of Chancery Mansion	---	NM6	Façade	Accesses to the original proposed monitoring location in the EM&A Manual, Chancery House (N5), were denied; alternative location of Chancery Mansion (N6), were therefore proposed and approved by the Authorised Person (AP), the Independent Environmental Checker (IEC) and EPD.

The noise sensitive receivers are also shown in *Annex C*.

3.1.2 Monitoring Parameters, Frequency and Programme

Weekly construction noise monitoring was conducted in accordance with the requirements stipulated in the EM&A Manual. The monitoring programme for this reporting period is shown in *Annex D*.

The construction noise levels were measured in terms of A-weighted equivalent continuous sound pressure level (L_{eq}) in decibels dB(A). $L_{eq(30min)}$ were used as the monitoring parameter for the time period in between 0700 – 1900 hours on normal weekdays. Supplementary information for data auditing, two statistical sound levels L_{10} and L_{90} - the levels exceeded for 10 and 90 percent of the time respectively, were also recorded during the monitoring for reference. The measured noise levels were logged in every 5 minutes throughout the impact monitoring period.

3.1.3 Monitoring Equipment and Methodology

Construction noise measurements were conducted in accordance with the calibration and measurement procedures as stated in *Annex – General Calibration and Measurement Procedures of Technical Memorandum on Noise from*

Construction Work other than Percussive Piling (GW-TM) issued under the Noise Control Ordinance (NCO) (Cap 400).

The sound level meters and calibrator used for the noise measurement, as listed in Table 3.2, complies with the IEC 651: 1979 and 804:1985 (Type 1) specifications. The calibration certificates of the sound level meters are appended in Annex E.

Table 3.2 *Noise Monitoring Equipment*

Monitoring Stations	Monitoring Equipment (Sound Level Meter and Calibrator)
NM2, NM6	<u>Calibrator</u>
	CEL 120 (S/N 3421612)
	<u>Sound Level Meter</u>
	CEL-633A (S/N 3521757)

Immediately prior to and following the noise measurements, the accuracy of the measurement equipment was checked using an acoustic calibrator generating a known sound pressure level at a known frequency.

Measurements were accepted as the calibration level from before and after the noise measurement agree to within 1.0 dB(A).

3.1.4 *Event / Action Plan*

Table 3.3 *Action and Limit Levels for Construction Noise Monitoring*

Noise Monitoring Location	Action Level	Limit Level, $L_{eq(30mins), dB(A)}$	Remark
NM2, NM6	When one documented complaint is received from any one of the sensitive receivers	75 ^(note)	Applicable during 0700 - 1900 hours on normal weekdays.
Notes:			
(a) Acceptable Noise Levels for Area Sensitivity Rating of A/B/C. Limit Level is reduced to 70dB(A) for schools and 65dB(A) during school examination periods.			
(b) If works are to be carried out during restricted hours, the conditions stipulated in the CNP issued by the NCA have to be followed.			

The Event / Action Plan (EAP) for noise monitoring is presented in Annex F.

3.1.5 *Mitigation Measures*

The mitigation measures in accordance with the EP, EIA and EM&A Manual and their implementation status are presented in Annex G.

3.2 CULTURAL HERITAGE

3.2.1 *Vibration Monitoring*

In accordance with the EM&A Manual, vibration monitoring is required and the vibration control limits and vibration monitoring proposal are defined by a specialist for AMO's approval.

Baseline Monitoring

Baseline vibration monitoring was not conducted during the reporting period.

Vibration Monitoring for Demolition Works

As no demolition works were carried out, vibration monitoring for demolition works was not conducted during the reporting period.

Vibration Monitoring for Trial Piling and Pipe/Bored Piling Works

As no trial piling or pipe/bored piling works were carried out, vibration monitoring for trial piling and piling works was not conducted during the reporting period.

Vibration Monitoring for Other Construction Works

Vibration monitoring for specific construction works other than demolition works, trial piling works and pipe/bored piling works is also required in accordance with Building Department's requirement. The monitoring location is shown in *Annex L*. The number and location of monitoring location will depend on the location of the specific construction works. The vibration monitoring should be conducted for duration of 5 minutes on a daily basis (working day) at each vibration monitoring location.

Alert, Alarm and Action Levels

The Alert, Alarm and Action (AAA) Levels are to be implemented during the vibration monitoring and shown in *Table 3.4*.

Table 3.4 *Alert, Alarm and Action (AAA) Levels for Vibration Monitoring*

Instrument Type	Item Monitored	Alert Level	Alarm Level	Action Level
Vibration Monitoring	Horizontal Movement	2.0 mm/s	2.5 mm/s	3.0 mm/s

The Event / Action Plan (EAP) for vibration monitoring is shown in *Table 3.5*.

Table 3.5 *Event and Action Plan for Vibration Monitoring*

Events	Action
Exceedance of Alert Level	Notify Management Contractor
Exceedance of Alarm Level	Notify Authorised Person/ Resident Engineer
Exceedance of Action Level	Cease Works and submit mitigation

3.2.2 *Mitigation Measures*

Cultural heritage mitigation measures (including those for archaeology) in accordance with the EP, EIA and EM&A Manual were implemented by the Contractor and the implementation status is given in *Annex G*.

3.3 *LANDSCAPE AND VISUAL MONITORING*

In accordance with the EM&A Manual, inspections of affected trees were conducted by an experienced and appropriately trained arborist. All irregularities that deviate from the recommended tree protection measures or could impose deleterious impacts on the protected trees were reported. Besides, implementation of mitigation measures for landscape and visual resources recommended in the EIA Report were also monitored during the site inspection.

3.3.1 *Mitigation Measures*

Landscape and visual mitigation measures in accordance with the EP, EIA and EM&A Manual were implemented by the Contractor and the implementation status is given in *Annex G*.

3.4 *ENVIRONMENTAL REQUIREMENTS IN CONTRACT DOCUMENTS*

The environmental requirements as specified in the contract documents were reviewed and were covered in the EIA's requirements.

IMPLEMENTATION STATUS ON ENVIRONMENTAL PROTECTION REQUIREMENTS

The Contractor has generally implemented the environmental mitigation measures (including those for archaeology) and requirements as stated in the EIA Report, the EP and EM&A Manual and the contract documents. The implementation status during the reporting period is summarized in *Annex G*.

Status of required submissions under the EP and EM&A Manual during the reporting period is presented in *Table 4.1*.

Table 4.1 *Status of Required Submissions*

Submission		Submission Date
<i>EP Condition</i>		
Condition 3.4	65 th Monthly EM&A Report	13 April 2017

5.1 NOISE

A total of 6 sets of 30-minute construction noise measurements were carried out at the monitoring stations (NM2 and NM6) during normal weekdays of the reporting period. The monitoring results together with graphical presentations are presented in *Annex H*. The local impacts observed near the monitoring stations of NM2 and NM6 were summarised below:

- NM2: construction noise from activities in the Project Site and traffic noise from Old Bailey Street.
- NM6: construction noise from activities in the Project Site and traffic noise from Chancery Lane.

No exceedance of the Action or Limit Level of construction noise was recorded during the reporting period.

5.2 CULTURAL HERITAGE**5.2.1 *Vibration Monitoring****Trial Piling and Piling works*

No vibration monitoring was carried out for the trial piling and piling works as there were no piling works conducted during the reporting period.

Other Construction Works

Vibration monitoring carried out for other construction works during the reporting period are listed below:

- 21 vibration monitoring measurements for the structural addition and alteration works at Block 11.

The monitoring results are presented in *Annex L*.

All monitoring results were below the Alert/Alarm/Action Levels.

5.2.2 *Heritage Site Audit*

Heritage site audits were conducted on every working weekday in April 2017 by the Heritage Checker during the reporting period.

Major observations and recommendations during the site inspections were listed below:

4 April 2017

- External paint at south elevation of Block 10 was observed defective. The Contractor was reminded to follow up and rectify the defective paint.

27 April 2017

- A historic hopper was observed damaged due to improper storage. The Contractor was reminded to follow up and improve supervision in handling historic building fabric.
- It was observed that the protection to painted sign at Block 12 was missing. The Contractor was reminded to follow up and provide sufficient protection to the painted sign.

28 April 2017

- Skirting of wrong profile was observed to be installed incorrectly in Block 3 room 03/T/02. The Contractor was reminded to rectify the incorrect installation.
- It was observed that the wall and door frame was damaged on ground floor at Block 14. The Contractor was reminded to follow up and provide sufficient supervision.
- Damage to the existing timber joints supporting the timber floor at Block 7 was observed. The Contractor was reminded to follow up.
- It was observed that the protection to painted sign at Block 9 lower ground floor was missing. The Contractor was reminded to follow up and provide sufficient protection to the painted sign.
- It was observed that the protection to terrazzo floor at Block 14 first floor was missing. The Contractor was reminded to follow up and provide sufficient protection.

The Contractor was urged to follow-up the necessary rectification based on the inspection findings.

5.3

LANDSCAPE AND VISUAL

The tree inspection was conducted by the arborist on 7 April 2017 and major observations and recommendations in the reporting period are summarised in *Table 5.1*. The tree inspection report is contained in *Annex J*.

Table 5.1 Findings of Monthly Tree Inspection in the Reporting Period and the Last Reporting Period

Tree No.	Botanical Name	Overall Health Condition	Arborist's Observations / Recommendations
Tree -5	<i>Mangifera indica</i>	Fair	<ul style="list-style-type: none"> The Contractor should closely monitor the growth of tree in coming months due to backfilling of new topsoil in December 2016.
Tree -6	<i>Aleurites moluccana</i>	Fair	<ul style="list-style-type: none"> No further action required.
Tree-7	<i>Aleurites moluccana</i>	Fair	<ul style="list-style-type: none"> No further action required.
Tree-8	<i>Plumeria rubra</i>	Fair	<ul style="list-style-type: none"> No further action required.
Tree-9	<i>Araucaria cunninghamia</i>	Fair	<ul style="list-style-type: none"> No further action required.
Tree-11	<i>Dracaena marginata</i>	Fair	<ul style="list-style-type: none"> Withered leaves were observed on the tree and at the planter; Renovation works were observed being carried out near the tree with working platform set up adjacent to the tree; A temporary shelter has been erected for protection of the tree; The Contractor should closely monitor the growth of the tree.

5.4

WASTE MANAGEMENT

Wastes generated from this Project include inert construction and demolition (C&D) materials and non-inert C&D materials. Non-inert C&D materials were made up of wastes such as general refuse and mixed construction waste. With reference to relevant handling records and trip tickets of this Project, the quantities of different types of waste generated in the reporting period are summarised in *Table 5.2*. No metal, paper/cardboard packaging or plastic waste was recycled during the reporting period. No chemical waste was collected by licenced chemical waste collector during the reporting period.

Table 5.2 *Quantities of Waste Generated from the Project*

Month/Year	Quantity						
	C&D Materials (inert) ^(a)	C&D Materials (non-inert) ^(b)	Chemical Waste		Recycled materials		
			Solid	Liquid	Paper/ cardboard ^(e)	Plastics	Metals
April 2017	32.19 tonnes ^(c)	103.21 tonnes ^(d)	0 kg	0 L	0 kg	0 kg	0 kg

Notes:

- (a) Inert C&D materials include bricks, concrete, building debris, rubble and excavated soil.
- (b) Non-inert C&D materials include general refuse and mixed construction waste which were disposed of at landfill site and/or sorting facilities.
- (c) 22.67 tonnes and 9.52 tonnes of inert C&D materials were sent to Chai Wan Public Fill Barging Point and Tseung Kwan O 137 Fill Bank, respectively.
- (d) 55.32 tonnes and 47.89 tonnes of non-inert C&D materials were disposed of at SENT Landfill and Tseung Kwan O Area 137 Sorting Facility, respectively.
- (e) 160 kg of paper/cardboard has been recycled in March 2017 which was not reported in the monthly EM&A report in March 2017. The quantity was reported by the Contractor after the submission of the monthly EM&A report in March 2017.

Joint environmental site inspection was conducted by the representatives of the Contractor, IEC and the ET in the reporting period on 20 April 2017.

There was no non-compliance recorded during the site inspection.

Follow-up Actions for the Last Site Audit

- Nil.

Observations and Recommendations of this Reporting Month

- Nil.

7 ENVIRONMENTAL NON-CONFORMANCE

7.1 SUMMARY OF MONITORING EXCEEDANCE

No exceedance of the Action or Limit Level of construction noise or Alert, Alarm and Action Levels of vibration was recorded during the reporting period.

7.2 SUMMARY OF ENQUIRY

No enquiry was recorded during the reporting period.

7.3 SUMMARY OF NON-COMPLIANCE

No environmental non-compliance event was recorded during the reporting period. No non-compliance report related to the character defining elements, historic buildings and structures was issued during the reporting period.

7.4 SUMMARY OF ENVIRONMENTAL COMPLAINT

No complaint was received during the reporting period. The cumulative number of complaints is presented in *Annex K*.

7.5 SUMMARY OF ENVIRONMENTAL SUMMONS AND SUCCESSFUL PROSECUTION

No summons/prosecution was received during the reporting period.

8.1 KEY ISSUES FOR THE COMING MONTH

Construction works at the CPS site have resumed except for Block 4. Works to be undertaken for the coming monitoring period are summarised in *Table 8.1*.

Table 8.1 Construction Works to be Undertaken in the Coming Month

Work to be Undertaken
<ul style="list-style-type: none"> • Hard landscape construction; • Timber elements repair and replacement at Blocks 3, 6, 7, 9 and 14; • Fitting out works at Blocks 1, 3, 6, 7, 9, 11, 13, 14, 15, 17, Arbuthnot Wing and Old Bailey Wing; • Metal works installation at Blocks 1, 3, 8, 9, 14 and 15; • External façade repair at Blocks 3, 8, 9, 10, 11, 12, 13, 14 and 17; • E&M fixing at Blocks 1, 3, 6, 7, 9, 13, 14, 15, Arbuthnot Wing and Old Bailey Wing; • Footbridge construction; and • Old Bailey Street staircase construction.

Potential environmental impacts arising from the above construction activities are mainly associated with dust, construction noise, site runoff and waste management.

8.2 MONITORING SCHEDULE FOR THE NEXT MONTH

The tentative schedule of noise monitoring for the next reporting period is presented in *Annex D*.

8.3 CONSTRUCTION PROGRAMME FOR THE NEXT MONTH

The most updated construction programme for the Project is presented in *Annex I*.

The *Environmental Monitoring and Audit (EM&A) Report* presents the EM&A works undertaken during the period from 1 to 30 April 2017 in accordance with EM&A Manual and the requirement under EP-408/2011/C.

No exceedance of the Action or Limit Level of construction noise was recorded at designated monitoring stations during the reporting period.

No exceedance of Alert, Alarm and Action Levels of vibration was recorded during the reporting period.

No enquiry was received during the reporting period.

No environmental non-compliance event was recorded during the reporting period. No non-compliance report related to the character defining elements, historic buildings and structures was issued during the reporting period.

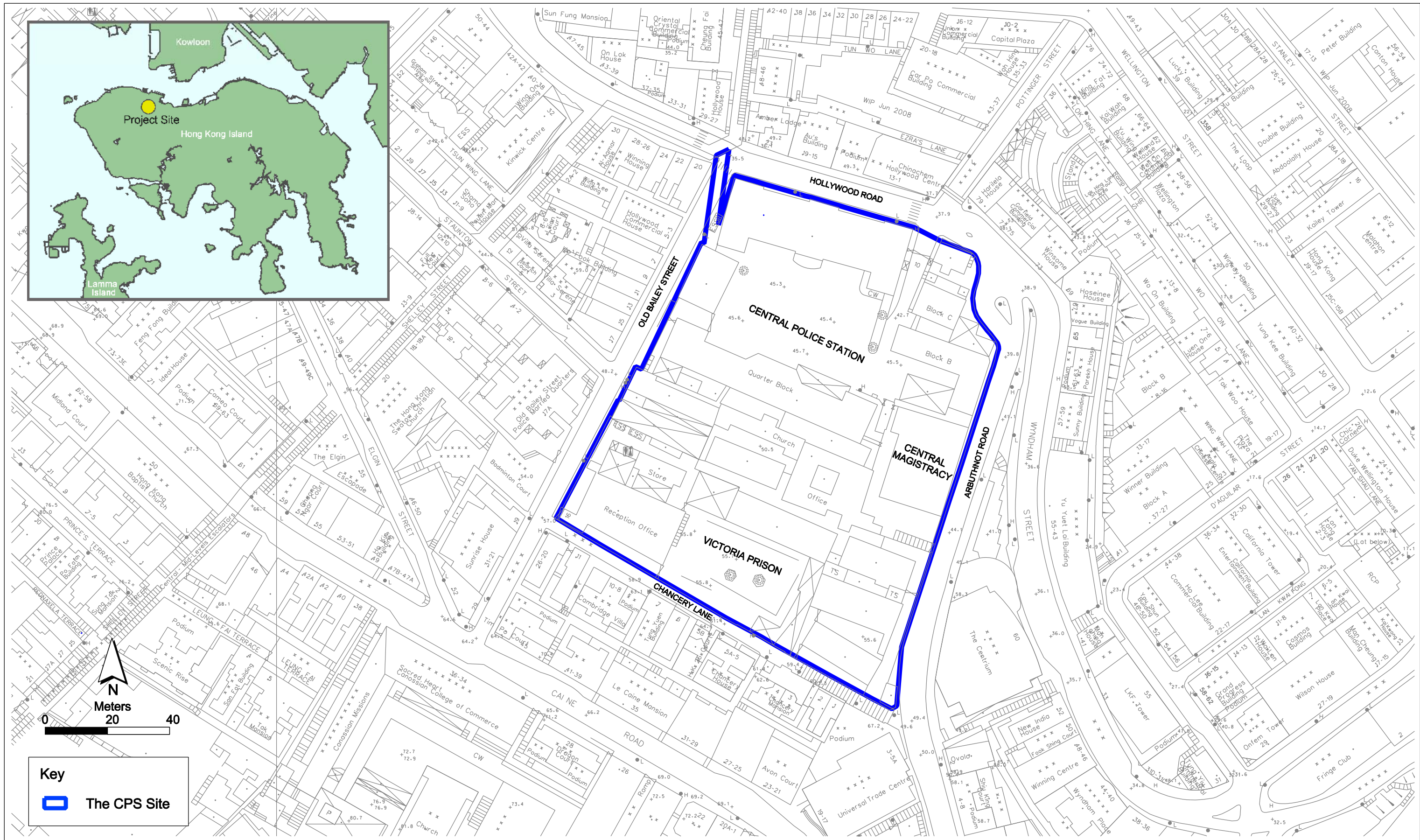
No complaint was received during the reporting period.

No summons/prosecution was received during the reporting period.

The ET will keep track on the EM&A programme to ensure compliance of environmental requirements and the proper implementation of all necessary mitigation measures.

Annex A

Locations of Works Areas and the Surroundings



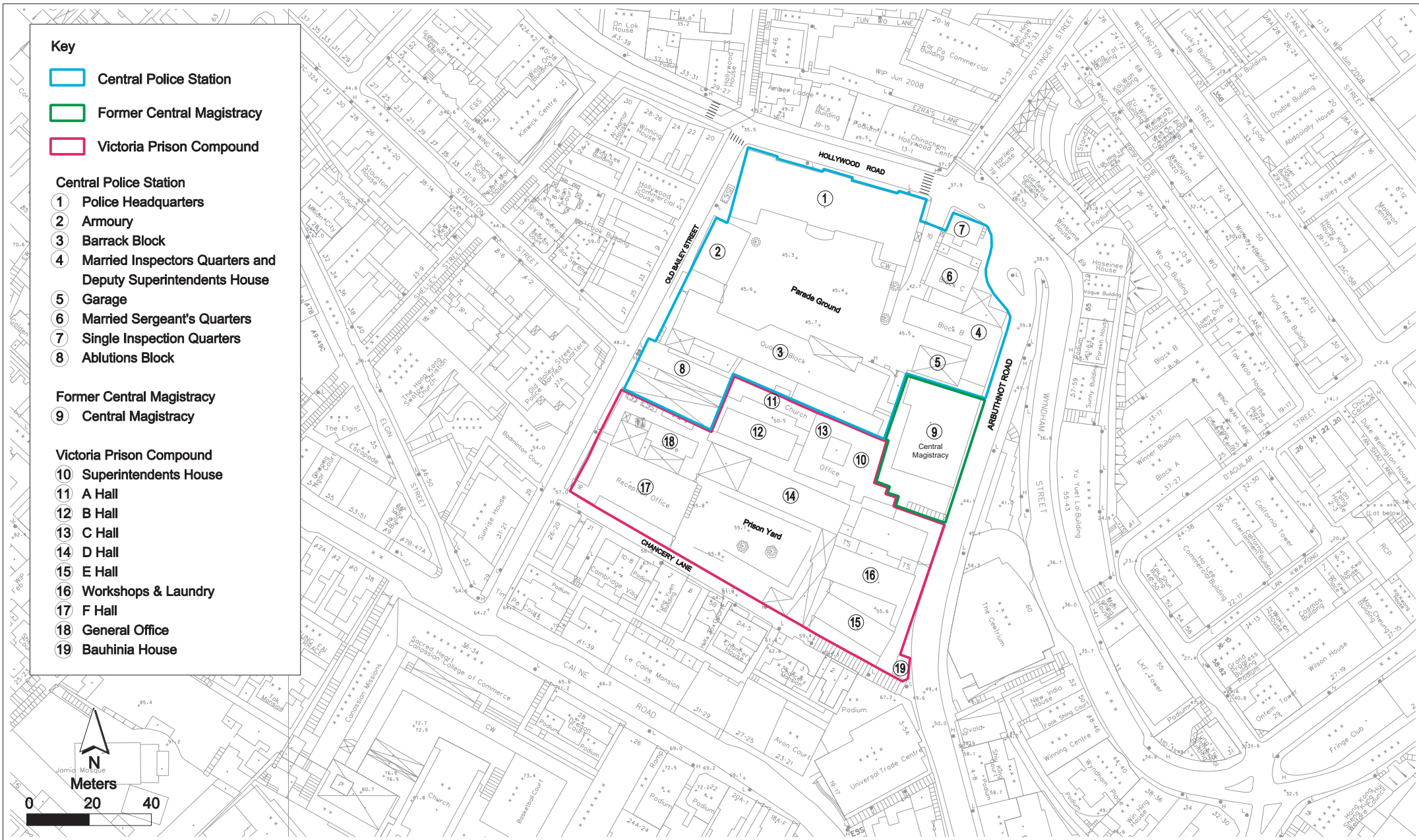
Annex A1

Project Location

**Environmental
Resources
Management**



賽馬會文物保育有限公司
The Jockey Club CPS Limited



Annex A2

Declared Monuments within the Project Site

FILE: 0095646b1-A3.dgn
DATE: 07/12/2011

**Environmental
Resources
Management**



賽馬會文物保育有限公司
The Jockey Club CPS Limited



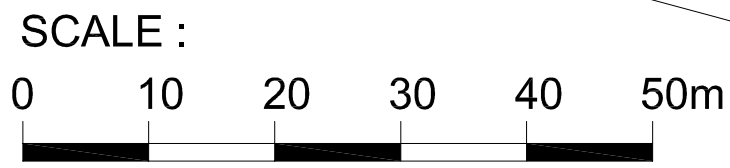
LEGEND

- 1. E&M Installation / Opening / Conduit Transformer delivery and installation
- 2. Excavation
- 3. Internal Building Works
- 4. Permanent Steel Works Erection
- 5. Upgrading
- 6. Roof Replacement Works / New Roof / Repair
- 7. Basement Construction
- 8. Structure A&A Works
- 9. Repair Works to Timber Window, Door, Structure, Floor and Metal
- 10. Demolition Works
- 11. Facade Works / Link Bridge Repair
- 12. New Structure Construction
- 13. Balcony Repair
- 14. Paint Stripping and Plastering Works
- 15. Core Wall Construction
- 16. Utilities Diversion and Carriageway
- 17. PBR
- 18. Removal of Needle Beams
- 19. U/G Drainage
- 20. Service trench construction
- 21. Demolition of concrete block
- 22. New Balcony Construction
- 23. Construction of terminal Manhole
- 24. Emergency Works for collapsed building and BD inspection
- 25. Fitting Out Works / E&M Fixing

Elements

- 10. Demolition Works
- 11. Facade Works / Link Bridge Repair
- 12. New Structure Construction
- 13. Balcony Repair
- 14. Paint Stripping and Plastering Works
- 15. Core Wall Construction
- 16. Utilities Diversion and Carriageway
- 17. PBR
- 18. Removal of Needle Beams
- 19. U/G Drainage
- 20. Service trench construction
- 21. Demolition of concrete block
- 22. New Balcony Construction
- 23. Construction of terminal Manhole
- 24. Emergency Works for collapsed building and BD inspection
- 25. Fitting Out Works / E&M Fixing

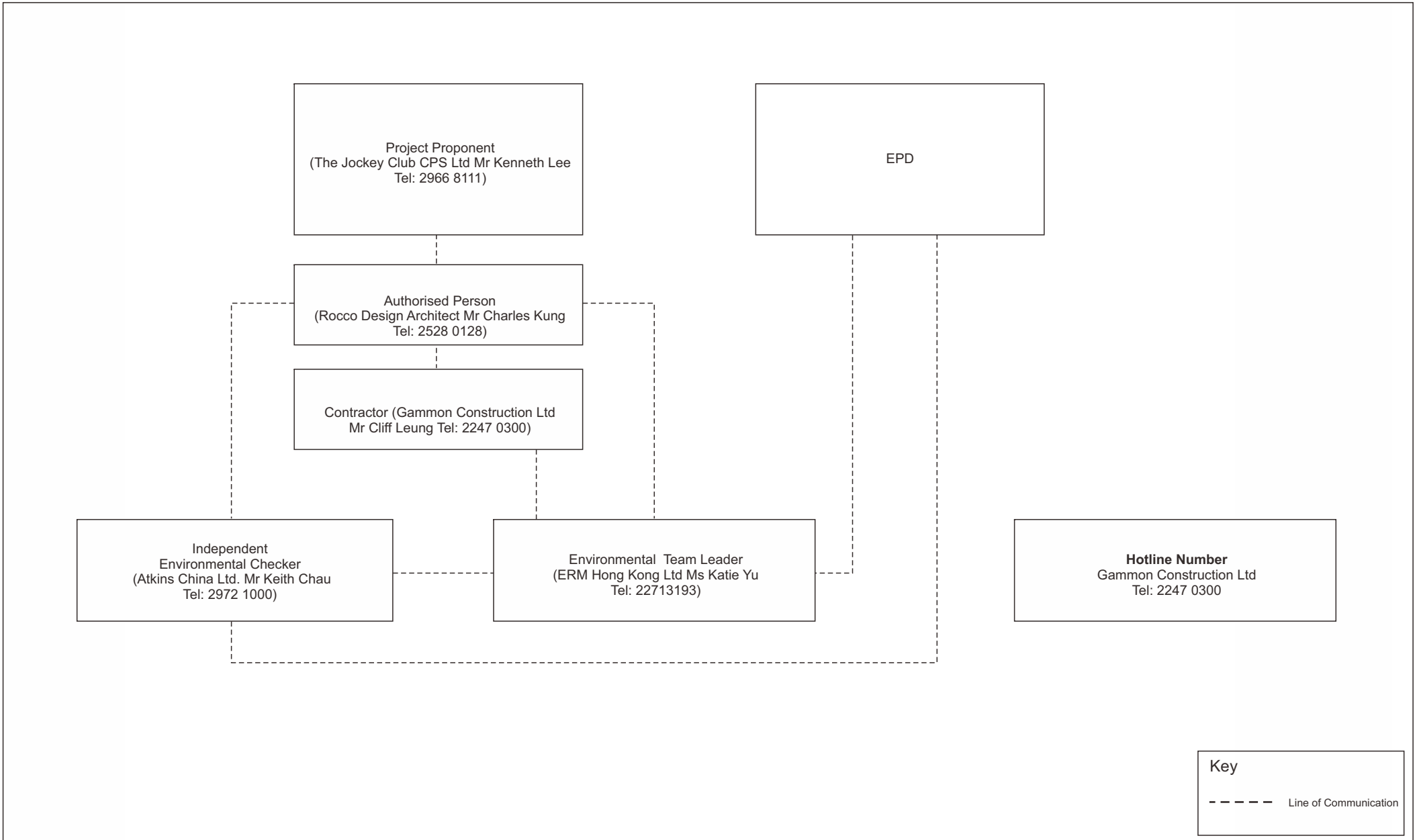
Drawing Title SITE LAYOUT PLAN	
Drawn	Scale N.T.S.
Designed	Status Marked for Enquiry & Complaint log (CPS/E&C/09)
Checked	Drawing No.
Approved	CAD Ref



Annex A3 Site Layout Plan marked with Works (Apr - 2017)

Annex B

Project Organization Chart and Contact Detail



Key
 - - - - - Line of Communication



Annex C

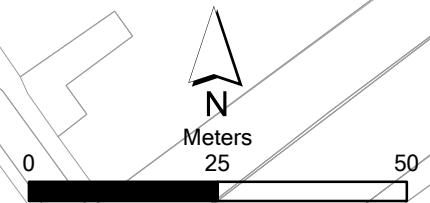
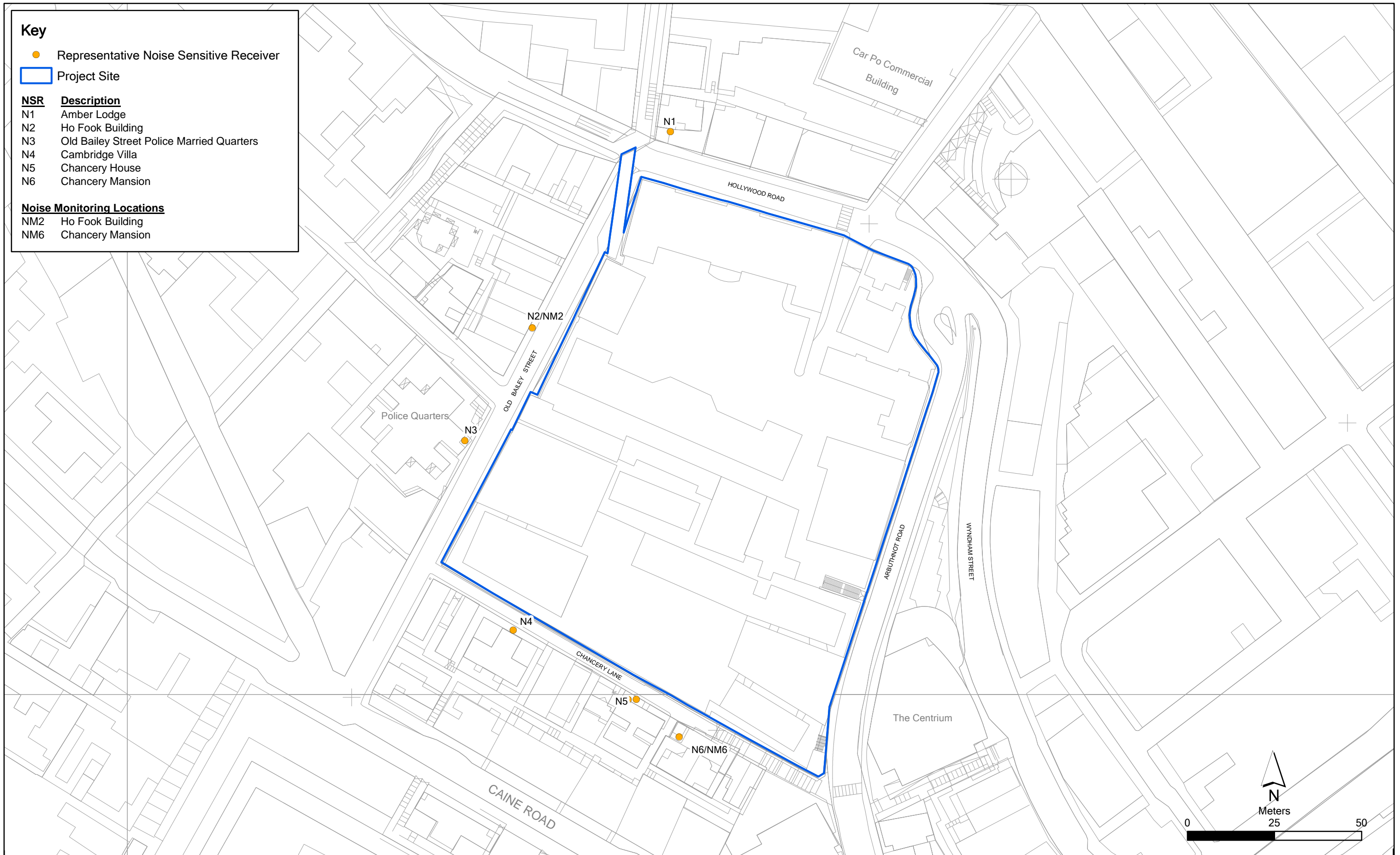
Locations of Noise
Monitoring Stations and
Noise Sensitive Receivers

Key

- Representative Noise Sensitive Receiver
- ▭ Project Site

NSR	Description
N1	Amber Lodge
N2	Ho Fook Building
N3	Old Bailey Street Police Married Quarters
N4	Cambridge Villa
N5	Chancery House
N6	Chancery Mansion

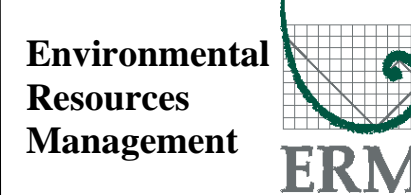
Noise Monitoring Locations	
NM2	Ho Fook Building
NM6	Chancery Mansion



Annex C

Location of Representative Noise Sensitive Receivers and Noise Monitoring Locations

File: 0095646_NSR_NM_May2012.mxd
Date: 09/05/2012



賽馬會文物保育有限公司
The Jockey Club CPS Limited

Annex D

Monitoring Schedule of the Reporting Period and Next Month

**Central Police Station Compound Conservation and Revitalisation
(Ho Fook Building - NM2 & Chancery Mansion - NM6)
Monitoring Schedule for Reporting Month - April 2017**

Sunday	Monday	Tuesday	Wednesday	Thursday	Friday	Saturday
						01-Apr
02-Apr	03-Apr	04-Apr	05-Apr	06-Apr	07-Apr	08-Apr
	Noise Monitoring at NM2 & NM6	Public Holiday			Noise Monitoring at NM2 & NM6	
09-Apr	10-Apr	11-Apr	12-Apr	13-Apr	14-Apr	15-Apr
			Noise Monitoring at NM2 & NM6		Public Holiday	Public Holiday
16-Apr	17-Apr	18-Apr	19-Apr	20-Apr	21-Apr	22-Apr
	Public Holiday	Noise Monitoring at NM2 & NM6				
23-Apr	24-Apr	25-Apr	26-Apr	27-Apr	28-Apr	29-Apr
	Noise Monitoring at NM2 & NM6					Noise Monitoring at NM2 & NM6
30-Apr						

**Central Police Station Compound Conservation and Revitalisation
(Ho Fook Building - NM2 & Chancery Mansion - NM6)
Monitoring Schedule for Next Reporting Month - May 2017**

Sunday	Monday	Tuesday	Wednesday	Thursday	Friday	Saturday
	01-May	02-May	03-May	04-May	05-May	06-May
	Public Holiday		Public Holiday		Noise Monitoring at NM2 & NM6	
07-May	08-May	09-May	10-May	11-May	12-May	13-May
				Noise Monitoring at NM2 & NM6		
14-May	15-May	16-May	17-May	18-May	19-May	20-May
			Noise Monitoring at NM2 & NM6			
21-May	22-May	23-May	24-May	25-May	26-May	27-May
		Noise Monitoring at NM2 & NM6				
28-May	29-May	30-May	31-May			
	Noise Monitoring at NM2 & NM6					

Annex E

Calibration Reports for Calibrators and Sound Level Meters



Certificate of Calibration 校正證書

Certificate No. : C166691
證書編號

ITEM TESTED / 送檢項目 (Job No. / 序引編號 : IC16-2717) Date of Receipt / 收件日期 : 28 November 2016

Description / 儀器名稱 : Acoustic Calibrator
Manufacturer / 製造商 : Casella
Model No. / 型號 : CEL-120/1
Serial No. / 編號 : 3421612
Supplied By / 委託者 : Envirotech Services Co.
Room 113, 1/F, My Loft, 9 Hoi Wing Road, Tuen Mun,
New Territories, Hong Kong

TEST CONDITIONS / 測試條件

Temperature / 溫度 : $(23 \pm 2)^{\circ}\text{C}$ Relative Humidity / 相對濕度 : $(55 \pm 20)\%$
Line Voltage / 電壓 : ---

TEST SPECIFICATIONS / 測試規範

Calibration check

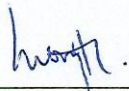
DATE OF TEST / 測試日期 : 30 November 2016


TEST RESULTS / 測試結果

The results apply to the particular unit-under-test only.
The results do not exceed manufacturer's specification.
The results are detailed in the subsequent page(s).

The test equipment used for calibration are traceable to National Standards via :

- The Government of The Hong Kong Special Administrative Region Standard & Calibration Laboratory
- Agilent Technologies / Keysight Technologies
- Rohde & Schwarz Laboratory, Germany
- Fluke Everett Service Center, USA

Tested By : 
測試 : _____
H T Wong
Technical Officer

Certified By : 
核證 : _____
K O Lee
Project Engineer

Date of Issue : 7 December 2016
簽發日期

The test equipment used for calibration are traceable to the Nation Standards as specified in this certificate. This certificate shall not be reproduced except in full, without the prior written approval of this laboratory.

本證書所載校正用之測試器材均可溯源至國際標準。局部複印本證書需先獲本實驗所書面批准。

Certificate of Calibration

校正證書

Certificate No. : C166691

證書編號

- The unit-under-test (UUT) was allowed to stabilize in the laboratory for over 12 hours before the commencement of the test.
- The results presented are the mean of 3 measurements at each calibration point.
- Test equipment :

<u>Equipment ID</u>	<u>Description</u>	<u>Certificate No.</u>
CL130	Universal Counter	C163709
CL281	Multifunction Acoustic Calibrator	PA160023
TST150A	Measuring Amplifier	C161175

- Test procedure : MA100N.

- Results :

5.1 Sound Level Accuracy

UUT Nominal Value	Measured Value (dB)	Mfr's Spec. (dB)	Uncertainty of Measured Value (dB)
94 dB, 1 kHz	94.1	± 0.25	± 0.2
114 dB, 1 kHz	114.1		

5.2 Frequency Accuracy

UUT Nominal Value (kHz)	Measured Value (kHz)	Mfr's Spec.	Uncertainty of Measured Value (Hz)
1	1.000 0	1 kHz ± 5 Hz	± 0.1

Remark : The uncertainties are for a confidence probability of not less than 95 %.

Note :

Only the original copy or the laboratory's certified true copy is valid.

The values given in this Certificate only relate to the values measured at the time of the test and any uncertainties quoted will not include allowance for the equipment long term drift, variations with environment changes, vibration and shock during transportation, overloading, mis-handling, or the capability of any other laboratory to repeat the measurement. Sun Creation Engineering Limited shall not be liable for any loss or damage resulting from the use of the equipment.



輝創工程有限公司

Sun Creation Engineering Limited

Calibration and Testing Laboratory

Certificate of Calibration

校正證書

Certificate No. : C166692

證書編號

ITEM TESTED / 送檢項目 (Job No. / 序引編號 : IC16-2717) Date of Receipt / 收件日期 : 28 November 2016

Description / 儀器名稱 : Sound Level Meter

Manufacturer / 製造商 : Casella

Model No. / 型號 : CEL-633A

Serial No. / 編號 : 3521757

Supplied By / 委託者 : Envirotech Services Co.

Room 113, 1/F, My Loft, 9 Hoi Wing Road, Tuen Mun,
New Territories, Hong Kong

TEST CONDITIONS / 測試條件

Temperature / 溫度 : $(23 \pm 2)^{\circ}\text{C}$

Relative Humidity / 相對濕度 : $(55 \pm 20)\%$

Line Voltage / 電壓 : ---

TEST SPECIFICATIONS / 測試規範

Calibration check

DATE OF TEST / 測試日期 : 30 November 2016

TEST RESULTS / 測試結果

The results apply to the particular unit-under-test only.

The results do not exceed manufacturer's specification.

The results are detailed in the subsequent page(s).

The test equipment used for calibration are traceable to National Standards via :

- The Government of The Hong Kong Special Administrative Region Standard & Calibration Laboratory
- Agilent Technologies / Keysight Technologies
- Rohde & Schwarz Laboratory, Germany
- Fluke Everett Service Center, USA

Tested By

測試

H T Wong

Technical Officer

Certified By

核證

K C Lee

Project Engineer

Date of Issue

簽發日期

7 December 2016

The test equipment used for calibration are traceable to the Nation Standards as specified in this certificate. This certificate shall not be reproduced except in full, without the prior written approval of this laboratory.

本證書所載校正用之測試器材均可溯源至國際標準。局部複印本證書需先獲本實驗室所書面批准。

Sun Creation Engineering Limited – Calibration & Testing Laboratory

c/o 4/F, Tsing Shan Wan Exchange Building, 1 Hing On Lane, Tuen Mun, New Territories, Hong Kong

輝創工程有限公司 – 校正及檢測實驗室

c/o 香港新界屯門興安里一號青山灣機樓四樓

Tel/電話: 2927 2606 Fax/傳真: 2744 8986

E-mail/電郵: callab@suncreation.com

Website/網址: www.suncreation.com

Page 1 of 4

Certificate of Calibration

校正證書

Certificate No. : C166692

證書編號

- The unit-under-test (UUT) was allowed to stabilize in the laboratory for over 12 hours, and switched on to warm up for over 10 minutes before the commencement of the test.
- Self-calibration using the Casella Acoustic Calibrator CEL-120/1, S/N : 3421612 was performed before the test.
- The results presented are the mean of 3 measurement at each calibration point.
- Test equipment :

Equipment ID	Description	Certificate No.
CL280	40 MHz Arbitrary Waveform Generator	C160077
CL281	Multifunction Acoustic Calibrator	PA160023

- Test procedure : MA101N.

- Results :

- 6.1 Sound Pressure Level

- 6.1.1 Reference Sound Pressure Level

UUT Setting		Applied Value		UUT Reading (dB)	IEC 61672 Class 1 Spec. (dB)
Time Weighting	Frequency Weighting	Level (dB)	Freq. (kHz)		
L _F	A	114.00	1	113.7	± 1.1

- 6.1.2 Linearity

UUT Setting		Applied Value		UUT Reading (dB)
Time Weighting	Frequency Weighting	Level (dB)	Freq. (kHz)	
L _F	A	114.00	1	113.7 (Ref.)
		104.00		103.7
		94.00		93.5

IEC 61672 Class 1 Spec. : ± 0.6 dB per 10 dB step and ± 1.1 dB for overall different.

- 6.2 Time Weighting

UUT Setting		Applied Value		UUT Reading (dB)	IEC 61672 Class 1 Spec. (dB)
Time Weighting	Frequency Weighting	Level (dB)	Freq. (kHz)		
L _F	A	114.00	1	113.7	Ref.
L _S				113.7	± 0.3

The test equipment used for calibration are traceable to the Nation Standards as specified in this certificate. This certificate shall not be reproduced except in full, without the prior written approval of this laboratory.

本證書所載校正用之測試器材均可溯源至國際標準。局部複印本證書需先獲本實驗室所書面批准。

Certificate of Calibration

校正證書

Certificate No. : C166692

證書編號

6.3 Frequency Weighting

6.3.1 A-Weighting

UUT Setting		Applied Value		UUT Reading (dB)	IEC 61672 Class 1 Spec. (dB)
Time Weighting	Frequency Weighting	Level (dB)	Freq.		
L _F	A	94.00	63 Hz	87.4	-26.2 ± 1.5
			125 Hz	97.5	-16.1 ± 1.5
			250 Hz	105.0	-8.6 ± 1.4
			500 Hz	110.4	-3.2 ± 1.4
			1 kHz	113.7	Ref.
			2 kHz	114.9	+1.2 ± 1.6
			4 kHz	114.6	+1.0 ± 1.6
			8 kHz	112.2	-1.1(+2.1 ; -3.1)
			12.5 kHz	108.1	-4.3(+3.0 ; -6.0)

6.3.2 C-Weighting

UUT Setting		Applied Value		UUT Reading (dB)	IEC 61672 Class 1 Spec. (dB)
Time Weighting	Frequency Weighting	Level (dB)	Freq.		
L _F	C	94.00	63 Hz	112.8	-0.8 ± 1.5
			125 Hz	113.5	-0.2 ± 1.0
			250 Hz	113.7	0.0 ± 1.0
			500 Hz	113.7	0.0 ± 1.0
			1 kHz	113.7	Ref.
			2 kHz	113.5	-0.2 ± 1.0
			4 kHz	112.8	-0.8 ± 1.0
			8 kHz	110.4	-3.0 (+1.5 ; -3.0)
			12.5 kHz	106.2	-6.2 (+3.0 ; -6.0)

The test equipment used for calibration are traceable to the Nation Standards as specified in this certificate. This certificate shall not be reproduced except in full, without the prior written approval of this laboratory.

本證書所載校正用之測試器材均可溯源至國際標準。局部複印本證書需先獲本實驗室所書面批准。



Certificate of Calibration

校正證書

Certificate No. : C166692
證書編號

Remarks : - UUT Microphone Model No. : CEL-251 & S/N : 1950

- Mfr's Spec. : IEC 61672 Class 1

- Uncertainties of Applied Value :

114 dB	: 63 Hz - 125 Hz	: ± 0.45 dB
	250 Hz - 500 Hz	: ± 0.40 dB
	1 kHz	: ± 0.30 dB
	2 kHz - 4 kHz	: ± 0.45 dB
	8 kHz	: ± 0.55 dB
	12.5 kHz	: ± 0.80 dB
104 dB	: 1 kHz	: ± 0.10 dB (Ref. 114 dB)
94 dB	: 1 kHz	: ± 0.10 dB (Ref. 114 dB)

- The uncertainties are for a confidence probability of not less than 95 %.

Note :

Only the original copy or the laboratory's certified true copy is valid.

The values given in this Certificate only relate to the values measured at the time of the test and any uncertainties quoted will not include allowance for the equipment long term drift, variations with environment changes, vibration and shock during transportation, overloading, mis-handling, or the capability of any other laboratory to repeat the measurement. Sun Creation Engineering Limited shall not be liable for any loss or damage resulting from the use of the equipment.

The test equipment used for calibration are traceable to the Nation Standards as specified in this certificate. This certificate shall not be reproduced except in full, without the prior written approval of this laboratory.

本證書所載校正用之測試器材均可溯源至國際標準。局部複印本證書需先獲本實驗室所書面批准。

Annex F

Event / Action Plans for Noise

Annex F Event and Action Plan for Noise

Event	Action			
	Environmental Team (ET)	Independent Environmental Checker (IEC)	Authorised Person (AP)	Contractor
Action Level	<ol style="list-style-type: none"> 1. Notify IEC and Contractor; 2. Carry out investigation; 3. Report the results of investigation to the IEC, AP and Contractor; 4. Discuss with the Contractor and formulate remedial measures; 5. Increase monitoring frequency to check mitigation effectiveness. 	<ol style="list-style-type: none"> 1. Review the analysed results submitted by the ET; 2. Review the proposed remedial measures by the Contractor and advise the AP accordingly; 3. Supervise the implementation of remedial measures. 	<ol style="list-style-type: none"> 1. Confirm receipt of notification of failure in writing; 2. Notify Contractor; 3. Require Contractor to proposed remedial measures for the analysed noise problem; 4. Ensure remedial measures are properly implemented. 	<ol style="list-style-type: none"> 1. Submit noise mitigation proposals to IEC; 2. Implement noise mitigation proposals.
Limit Level	<ol style="list-style-type: none"> 1. Identify source; 2. Inform IEC and AP; 3. Repeat measurements to confirm findings; 4. Increase monitoring frequency; 5. Carry out analysis of Contractor's working procedures to determine possible mitigation to be implemented; 6. Inform IEC, AP and EPD the causes and actions taken for the exceedances; 7. Assess effectiveness of Contractor's remedial actions and keep IEC, EPD and AP informed of the results; 8. If exceedance stops, cease additional monitoring. 	<ol style="list-style-type: none"> 1. Discuss amongst AP, ET, and Contractor on the potential remedial actions; 2. Review Contractors remedial actions whenever necessary to assure their effectiveness and advise the AP accordingly; 3. Supervise the implementation of remedial measures. 	<ol style="list-style-type: none"> 1. Confirm receipt of notification of failure in writing; 2. Notify Contractor; 3. Require Contractor to propose remedial measures for the analysed noise problem; 4. Ensure remedial measures properly implemented; 5. If exceedance continues, consider what portion of the work is responsible and instruct the Contractor to stop that portion of work until the exceedance is abated. 	<ol style="list-style-type: none"> 1. Take immediate action to avoid further exceedance; 2. Submit proposals for remedial actions to IEC within 3 working days of notification; 3. Implement the agreed proposals; 4. Resubmit proposals if problem still not under control; 5. Stop the relevant portion of works as determined by the AP until the exceedance is abated.

Annex G

Summary of Implementation Status

Annex G Implementation Schedule for Environmental Protection Measures

EIA Ref.	EM&A Ref.	Recommended Mitigation Measures	Location	When to Implement the Measure	Status
<i>Cultural Heritage</i>					
S3.9.1	S3.2.6	Subject to the outcome of the archaeological investigation, if archaeological deposits are identified to be impacted by the proposed development, appropriate mitigation measures will be recommended and agreed with AMO.	In accordance with the recommendations in the Archaeological Action Plan (AAP) issued on 21 Dec 11 and approved on 30 Dec 11 by AMO	During detailed design and construction	√
S3.9.2	S3.3.1	<u>Vibration Monitoring</u> A baseline condition survey and baseline vibration impact will be conducted by a specialist for the approval of AMO and Buildings Department prior to commencement of the construction works to define the vibration control limits and recommend a vibration monitoring proposal for the concerned historic buildings and structures in and outside CPS for AMO's prior approval before commencement of the construction works.	Historic buildings and structures in CPS, the granite walls at Old Bailey Street and the proposed Grade 3 historic building (No. 20 Hollywood Road)	During detailed design and construction	√
S3.9.2	S3.3.3	<u>Compliance of the Approved Measures and Auditing</u> Staff training by an experience building conservation expert or relevant competent person(s) in the environmental team of the project should be provided to the on-site staffs, contractors, sub-contractors and workers of the project before commencement of works to ensure their full understanding of the approved protection schedule, restoration proposal and work methodologies related to cultural heritage, and their respective responsibilities in the implementation of the environmental protection measures. Regular site audit for cultural heritage should be carried out in the construction phase by an experience building conservation expert in the environmental team ("the Heritage Checker") to investigate the site practice of the contractors and workers and their compliance of the approved work methodologies with respect of conservation works, mitigations for cultural heritage and any related works. A detailed	Whole site	Prior to and during construction	<>

EIA Ref.	EM&A Ref.	Recommended Mitigation Measures	Location	When to Implement the Measure	Status
		<p>proposal of the regular audit such as methodology (e.g. performance and monitoring indicators, control tools, frequency of the audit, etc.) and the conservation professionals to be engaged should be agreed with AMO prior to work commencement.</p> <p>The Heritage Checker shall also attend the regular site meetings with AMO and report the compliance and effectiveness of the mitigation measures for cultural heritage.</p>			
S3.9.3	S3.3.4	<p><u>Archival Recording</u></p> <p>An archival recording should be conducted to provide a detailed reference for the update of the Conservation Management Plan and inventory of historical features of the monuments, the preparation of as-built drawings showing the condition of the historic buildings and structures after the completion of the construction works. These archival records will be a reference source for future maintenance of the character defining elements, conservation of the monuments, interpretation and conservation education of the Site. The archival recording shall include but not limit to the video and photographic recording on the detailed process of the repair trials for different kinds of historical features, conservation works of character defining elements and historic fabrics of the monuments, and a written records of any new changes to the detailed design made in the construction phase illustrate with photos and drawings. A full set of the archives records (including both hard and soft copies) should be submitted to the AMO for approval after the work completion for record purpose. Any new findings related to the conservation of built heritage in the Site identified during the detailed design stage and construction phases shall be properly recorded in details for notification to the AMO and update of the Conservation Management Plan.</p>	Whole Site	During detailed design, construction and prior to operation	N/A – Archival recording will be conducted at later stage.
S3.7.3	-	<p><u>General Construction Methods</u></p> <p>Prior to the commencement of the modification/refurbishment works at an existing building or structure (e.g. masonry walls near the Old Bailey Wing), a site survey will be carried out by the design team, and all building dimensions and levels of the building/structure shown will be</p>	Whole site	During construction	At around 10:05pm on 29 May 2016, the northwest corner of Block 4 partially collapsed. The collapsed area includes northwest corner roof, west elevation façade wall, north elevation façade wall west part, 1/F and 2/F verandah west part, 2/F

EIA Ref.	EM&A Ref.	Recommended Mitigation Measures	Location	When to Implement the Measure	Status
		checked and confirmed by the contractor. Non-percussive piling methods will be adopted for the construction of the foundation for the new buildings. Protective and precaution measures to the existing buildings and structure adjacent to the work area (including the proposed Grade 3 historic building (No. 20 Hollywood road) and the granite boundary walls between the Ablutions Block of the police station (building no. 08) and the General Office of the prison area (building no. 18) which is adjacent to the new construction of the Old Bailey Wing and for an old granite walls at Old Bailey Street within 15m from the new construction) shall be provided to avoid damage to the existing features and to safeguard the structural integrity during the course of construction. Small scale handheld pneumatic tools with minimal vibration impact to the existing buildings/ structures are selected so as to have a better logistic and handling at the existing buildings and structures, which usually have only narrow working areas. In cases of the local demolition of structural elements, demountable platforms will be erected to temporarily support the affected area and divert the loading from above to avoid instability and create excessive cracking and settlement of the building/structure.			west balcony, floor structure in room 04/5/03. Temporary propping has been undertaken to prevent further collapse. Construction works have resumed except Block 4.
S3.7.1 & 3.7.2	-	Implementation and update of the Conservation Management Plan (CMP). Any new findings related to the conservation of the built heritage in the site identified during the detailed design and construction stage shall be properly recorded in details for the notification to the AMO and update in the CMP. After the construction, a cartographic and photographic recording on the restored historic buildings, historic features and the site shall be conducted and the following records shall be included into the CMP as appendices for updating and record purpose: <ul style="list-style-type: none"> • one set of measured drawings and photographic records showing the as-built condition of historic buildings and structures; and • an updated inventory list of the historic features together with the cross referenced location plans and photo records. One set of updated CMP shall be submitted to the AMO for approval before the operation stage of the project.	Whole site	During detailed design, construction, post-construction and operation	√ - CMP was implemented during the reporting month. There were no updates for the CMP.

EIA Ref.	EM&A Ref.	Recommended Mitigation Measures	Location	When to Implement the Measure	Status
<i>Landscape & Visual</i>					
S4.7.27	-	<p><u><i>In-situ Tree Protection - Cordon Zone (CZ)</i></u></p> <p>Cordon off each tree along its drip line (below the crown) with a chain-link fencing of 2.5 m height with padlocked gate, allowing limited access to area only to authorized persons. The base of the perimeter fence will be sealed up to 30 cm height to ensure that no construction drainage water will enter. If grouting is to be conducted less than 5 m from the edge of the CZ, a waterproof membrane will be installed below the ground to a depth of 1.5 m on the outer edge of the CZ to prevent the subsurface lateral movement of contaminated construction wastewater from intruding the soil inside the CZ.</p>	Whole site	During construction	√
S4.7.2	-	<p><u><i>In-situ Tree Protection - Advanced & Phased Root Pruning</i></u></p> <p>All edges of the CZ that will be affected by excavation will undergo root pruning by a trained arborist or horticulturist, in advance of the earth work. The entire affected length of the CZ, plus 3 m additional length at both ends, shall be designated as the root pruning segment (RPS). The require trench will be opened manually in the RPS, be 1.5 m deep and 1 m wide, and closed on the same day after pruning with a good soil mix. All roots with a diameter >20 mm encountered in the course of trench opening shall be cut flushed with the inner wall of the trench. If the RPS exceeds one-quarter of the CZ circumference, the root pruning should be conducted in two stages. Each phase will tackle half of the RPS length. After the first phase, the tree will be allowed to recuperate for not less than four months before the second phase root pruning is conducted. The RPS shall be protected by sheet piles along the outer edge. The rig that installs the piles and the associated operations shall not intrude into the CZ or injure the protected tree.</p>	Whole site	During construction	N/A – no root pruning has been conducted yet
S4.7.2	-	<p><u><i>In-situ Tree Protection - Foliage cleansing system</i></u></p> <p>A sprinkler cleansing system will be installed either in the crown of the tree or at a suitable location on an adjacent building to provide the</p>	Whole site	During construction	√

EIA Ref.	EM&A Ref.	Recommended Mitigation Measures	Location	When to Implement the Measure	Status
		means to wash the foliage of the accumulated dust when necessary, particularly in the dry season.			
S4.7.2	S4	<p><u>In-situ Tree Protection - Monthly inspection</u></p> <p>Monthly inspection of affected trees by an experienced and appropriately trained arborist or horticulturist using Form 1 – Tree Group Inspection Form and Form 2 – Tree Risk Assessment Form developed by Development Bureau (http://www.trees.gov.hk/en/doc/TRAGuideline_July2010version_combine.pdf) or a form designed by a tree expert and approved by Tree Management Office. All irregularities that deviate from the recommended tree protection measures, or could impose deleterious impacts on the protected trees, must be reported to the authorized person or the tree expert within two days.</p>	Whole site	During construction	√
S4.7.2	-	<p><u>Light Control</u></p> <p>Control of night-time lighting shall be implemented to minimise impact to adjacent VSRs.</p>	Whole site	During construction and operation	√
S4.7.2	S4	<p><u>Compensatory Tree Planting</u></p> <p>A new planting site has been identified for compensatory tree planting in the Parade Ground. The planting is to compensate for felling of T10 and T10a. The existing tree site will be enlarged to become a wide tree strip to accommodate the compensatory trees. The entire strip of land that accommodates T1 to T4 should be revamped to improve the soil condition for future tree growth.</p> <p>The new tree strip should be 4 m wide and covered by porous unit pavers to permit the entry of rain and irrigation water and air exchange between the soil and the atmosphere. The unit pavers should be supported by small columns to create a vault-like structure so as to avoid compaction of the underlying soil due to pedestrian trampling. The unit pavers will be movable to provide access to the soil underneath so that fertilizers and conditioners could be added on a</p>	At identified compensatory tree planting location at the Parade Ground	During detailed design and construction	N/A – Compensatory Tree Planting will be conducted at later stage.

EIA Ref.	EM&A Ref.	Recommended Mitigation Measures	Location	When to Implement the Measure	Status
		<p>regular basis. The air conditioner unit currently located near the proposed planting site should also be removed. This new tree planting site should also be provided with proper irrigation.</p> <p>Pursuant to the "Environment, Transport and Works Bureau Technical Circular (Works) No. 3/2006 Tree Preservation", the compensation ratio should preferably be 1:1 according to trunk girth. An aggregate DBH of the new trees would be 60cm, the rate of compensation is beyond the requirements</p> <p>The replacement trees should be planted in accordance with the requirement of the landscape proposal approved by the Planning Department.</p>			
S4.7.2	S4	<p><u>Existing Granite Revetment Wall</u></p> <p>The inner stone face along the southern wall of the Site shall be preserved to its original historical appearance.</p>	Inner Southern Wall	During detailed design and construction	√
S4.7.2	-	<p><u>New Custom Paving</u></p> <p>New, Patterned, High Quality, Concrete Custom Pavers should replace most of the existing paving in the open spaces.</p>	Whole site	During detailed design and construction	N/A – No custom paving was conducted during the reporting month.
S4.7.2	S4	<p><u>In-situ Tree Protection - Quarterly inspection</u></p> <p>Quarterly Inspection of affected and newly planted trees by an experienced and appropriately trained arborist or horticulturist using Form 1 – Tree Group Inspection Form and Form 2 – Tree Risk Assessment Form developed by Development Bureau (http://www.trees.gov.hk/en/doc/TRAGuideline_July2010version_combine.pdf) or a form designed by a tree expert and approved by Tree Management Office for a period of 12 months after construction.</p>	Whole site	During post construction and operation	N/A – The quarterly inspection will be conducted at later stage.
<i>Noise</i>					
S5.9	-	The following site practices should be followed during the construction of the Project:	Whole Site	During	√

EIA Ref.	EM&A Ref.	Recommended Mitigation Measures	Location	When to Implement the Measure	Status
		<ul style="list-style-type: none"> • Only well-maintained plant will be operated on-site and plant will be serviced regularly during the construction phase; • Silencers or mufflers on construction equipment will be utilised and will be properly maintained during the construction phase; • Mobile plant, if any, will be sited as far away from NSRs as possible; • Machines and plant (such as trucks) that may be in intermittent use will be shut down between work periods or will be throttled down to a minimum; • Plant known to emit noise strongly in one direction will, wherever possible, be orientated so that the noise is directed away from the nearby NSRs; and • Material stockpiles and other structures will be effectively utilised, wherever practicable, in screening noise from on-site construction activities. 		construction	
S5.9	-	Noise insulating sheet would be adopted for certain PME (eg drill rig, excavator for demolition of existing structures, etc). The noise insulating sheet should be deployed such that there would be no opening or gaps on the joints.	Whole Site	During construction	√
S5.9	-	Use temporary noise barriers to mitigate the noise impact arising from the construction works, particularly for low-rise NSRs. Movable noise barriers of 3 m in height with skid footing should be used and located within a few metres of stationary plant and mobile plant such that the line of sight to the NSR is blocked by the barriers. The length of the barrier should be at least five times greater than its height. The noise barrier material should have a superficial surface density of at least 7 kg m ⁻² and have no openings or gaps.	Whole Site	During construction	√
S5.9	-	Use quiet PME as far as practicable to mitigate the construction noise impact.	Whole Site	During construction	√
S5.9	-	Scheduling of construction activities with identified grouping of PMEs.	Whole Site	During construction	√
S5.11	S5	Weekly noise monitoring will be undertaken at the representative NSRs N2 Ho Fook Building and N5 Chancery House. Monthly site audits will be conducted to ensure that the recommended mitigation measures	Whole Site	During construction	√

EIA Ref.	EM&A Ref.	Recommended Mitigation Measures	Location	When to Implement the Measure	Status
		are properly implemented during the construction stage.			
<i>Air Quality</i>					
S6.8.1	-	Dust control measures stipulated in the <i>Air Pollution Control (Construction Dust) Regulation</i> will be implemented during the construction phase to control the potential fugitive dust emissions.	Whole Site	During construction	√
S6.8.1	-	In particular: Temporary stockpiles of dusty materials will be either covered entirely by impervious sheets; placed in an area sheltered on the top and three sides; or sprayed with water to maintain the entire surface wet at all the time.	Whole Site	During construction	√
S6.8.1	-	Impervious sheet will be provided for skip hoist for material transport.	Whole Site	During construction	√
S6.8.1	-	Vehicle washing facilities will be provided at the designated vehicle exit points.	Whole Site	During construction	√
S6.8.1	-	Every vehicle will be washed to remove any dusty materials from its chassis and wheels immediately before leaving the worksite.	Whole Site	During construction	√
S6.8.1	-	Road sections between vehicle-wash areas and vehicular entrances will be paved.	Whole Site	During construction	√
S6.8.1	-	The load carried by the trucks will be covered entirely to ensure no dust emission from the vehicles.	Whole Site	During construction	√
S6.8.1	-	Hoarding of not less than 2.4m high from ground level will be provided along the Project Site boundary adjoining a road where the new buildings (Old Bailey Wing and Arbuthnot Wing) will be constructed.	Whole Site	During construction	√
S6.8.1	-	Stockpiles of more than 20 bags of cement, dry pulverised fuel ash and dusty construction materials will be covered entirely by impervious sheeting sheltered on top and 3-sides.	Whole Site	During construction	√
S6.8.1	-	An effective dust screen will be provided to enclose scaffolding, if required, from the ground floor level of building for construction of superstructure of the new buildings.	Whole Site	During construction	√

EIA Ref.	EM&A Ref.	Recommended Mitigation Measures	Location	When to Implement the Measure	Status
S6.8.1	-	Impervious dust screen or sheeting will be implemented for demolition of structures and renovation of outer surfaces of structures that abuts or fronts open area accessible to the public to no less than 1m higher than the highest level of the structure being demolished.	Whole Site	During construction	√
S6.8.1	-	The area at which demolition work takes place will be sprayed with water or dust suppression chemical immediately prior to, during and immediately after the demolition activity.	Area for Demolition Work	During construction	√
S6.8.1	-	ULSD will be used for all construction plant on-site.	Whole Site	During construction	√
S6.8.1	-	The engine of the construction equipment or trucks during idling will be switched off.	Whole Site	During construction	√
S6.8.1	-	Site practices such as regular maintenance and checking of construction equipment deployed on-site will be conducted to avoid any black smoke emissions and to minimise gaseous emissions.	Whole Site	During construction	N/A – Not observed.
S6.10	S3.2	Monthly environmental site audits to ensure that appropriate dust control measures are properly implemented and good construction site practices are adopted throughout the construction period.	Whole Site	During construction	√
<i>Water Quality</i>					
S7.6	-	Channels, earth bunds or sand bag barriers will be provided on site to direct stormwater to silt removal facilities. The design of silt removal facilities will make reference to the guidelines in <i>Appendix A1 of ProPECC PN 1/94</i> . All drainage facilities and erosion and sediment control structures will be inspected on a regular basis and maintained to confirm proper and efficient operation at all times and particularly during rainstorms. Deposited silt and grit will be removed regularly.	Whole Site	During construction	√
S7.6	-	All drainage facilities and erosion and sediment control structures will be regularly inspected and maintained to ensure proper and efficient operation at all times and particularly following rainstorms. Deposited silt and grit will be removed regularly and disposed of.	Whole Site	During construction	N/A – Not observed.

EIA Ref.	EM&A Ref.	Recommended Mitigation Measures	Location	When to Implement the Measure	Status
S7.6	-	Measures will be taken to reduce the ingress of stormwater into excavation areas. If the excavation of the concrete foundation is to be carried out in wet season, they will be dug and backfilled in short sections wherever practicable. Water pumped out from trenches or foundation excavations will be discharged into stormwater drains via silt removal facilities.	Whole Site	During construction	N/A – Not observed.
S7.6	-	Open stockpiles of excavated and demolition materials will be covered with tarpaulin or similar fabric during rainstorms. Measures will be taken to prevent the washing away of residues, chemicals or debris into any drainage system.	Whole Site	During construction	√
S7.6	-	Manholes (including newly constructed ones) will always be adequately covered and temporarily sealed so as to prevent silt, construction materials or debris being washed into the drainage system.	Whole Site	During construction	N/A – Not observed.
S7.6	-	Precautions will be taken when a rainstorm is imminent or forecasted, and actions to be taken during or after rainstorms are summarised in Appendix A2 of <i>ProPECC PN 1/94</i> . Particular attention will be paid to the control of silty surface runoff during storm events.	Whole Site	During construction	N/A – Not observed.
S7.6	-	All temporary and permanent drainage pipes and culverts provided to facilitate runoff discharge will be adequately designed for the controlled release of stormwater flows. All sediment traps will be regularly cleaned and maintained. The temporary diverted drainage will be reinstated to the original condition when the construction work has finished or the temporary diversion is no longer required.	Whole Site	During construction	N/A – Not observed.
S7.6	-	Vehicle and plant servicing areas, vehicle washing bays and lubrication bays will, as far as possible, be located within roofed areas. The drainage in these covered areas will be connected to foul sewers via a petrol interceptor.	Whole Site	During construction	N/A – Not observed.
S7.6	-	Oil leakage or spillage will be contained and cleaned up immediately. Waste oil will be collected and stored for recycling or disposal.	Whole Site	During construction	N/A – Not observed.
S7.6	-	Waste streams classifiable as chemical wastes will be properly stored, collected and treated.	Whole Site	During construction	√
S7.6	-	All fuel tanks and chemical storage areas will be provided with locks and be sited on paved areas.	Whole Site	During construction	<>

EIA Ref.	EM&A Ref.	Recommended Mitigation Measures	Location	When to Implement the Measure	Status
S7.6	-	The storage areas will be surrounded by bunds with a capacity equal to 110% of the storage capacity of the largest tank to prevent spilled oil, fuel and chemicals from reaching the receiving waters.	Whole Site	During construction	√
S7.6	-	The Contractors will prepare guidelines and procedures for immediate clean-up actions following any spillages of oil, fuel or chemicals.	Whole Site	During construction	√
S7.6	-	Surface runoff from bunded areas will pass through oil/grease traps prior to discharge to the stormwater system	Whole Site	During construction	N/A – Not observed.
S7.6	-	The stormwater discharge from the site will be monitored as part of the routine monitoring under the WPCO licence, if applicable.	Whole Site	During construction	N/A – Not observed.
S7.6	-	The existing toilet facilities of the CPS will be available to the construction workforce. The sewage will be discharged to the public sewer.	Whole Site	During construction	√
S7.8	S5.2	Monthly site audits of the works areas will be carried out during the construction phase to monitor the environmental performance of the Project and to enable prompt actions to rectify any malpractice which may give rise to water pollution problem.	Whole Site	During construction	√
<i>Waste Management</i>					
S8.5	S6.3.1 & Table 6.1	<u>General</u> The Contractor shall apply for and obtain all the necessary waste disposal permits or licences are obtained prior to the commencement of the construction works.	Whole Site	During construction	√
S8.5	-	<u>Management of Waste Disposal</u> The construction contractor will open a billing account with the EPD. Every construction waste or public fill load to be transferred to the Government waste disposal facilities such as public fill reception facilities, sorting facilities, landfills will require a valid “chit” which contains the information of the account holder to facilitate waste transaction recording and billing to the waste producer.	Whole Site	During construction	√
S8.5	S6.2	A trip-ticket system will also be established to monitor the disposal of construction waste at landfill and to control fly-tipping. The trip-ticket	Whole Site	During construction	√

EIA Ref.	EM&A Ref.	Recommended Mitigation Measures	Location	When to Implement the Measure	Status
		system will be included as one of the contractual requirements and implemented by the contractor.			
S8.5	S6 & Table 6.1	A recording system for the amount of wastes generated /recycled and disposed of will be established during the construction phase.	Whole Site	During construction	√
S8.5	S6.3	<u>Reduction of Construction Waste Generation</u> C&D material will be segregated on-site into public fill and construction waste and stored in different containers or skips to facilitate reuse of the public fill and proper disposal of the construction waste. Specific areas of the work site will be designated for such segregation and storage if immediate use is not practicable.	Whole Site	During construction	√
S8.5	S6	<u>Chemical Waste</u> The contractor will register as a chemical waste producer with the EPD.	Whole Site	During construction and operation	√
S8.5	S6	Containers used for storage of chemical waste shall: <ul style="list-style-type: none"> • Be suitable for the substance they are holding, resistant to corrosion, maintained in a good condition, and securely closed; • Have a capacity of less than 450 L unless the specifications have been approved by the EPD; and • Display a label in English and Chinese in accordance with instructions prescribed in <i>Schedule 2 of the Regulations</i>. 	Whole Site	During construction and operation	√
S8.5	S6	Storage areas for chemical waste shall: <ul style="list-style-type: none"> • Be clearly labelled and used solely for the storage of chemical waste; • Be enclosed on at least 3 sides; • Have an impermeable floor and bunding, of capacity to accommodate 110% of the volume of the largest container or 20% by volume of the chemical waste stored in that area, whichever is the greatest; • Have adequate ventilation; • Be covered to prevent rainfall entering (water collected within the bund must be tested and disposed of as chemical waste, if necessary); and 	Whole Site	During construction and operation	√

EIA Ref.	EM&A Ref.	Recommended Mitigation Measures	Location	When to Implement the Measure	Status
		<ul style="list-style-type: none"> Be arranged so that incompatible materials are appropriately separated. 			
S8.5	S6	A licensed contractor shall be employed to collect chemical waste for delivery to a licensed treatment facility.	Chemical Waste Treatment Centre at Tsing Yi	During construction and operation	√
S8.5	S6 & Table 6.1	<u>General Refuse</u> General refuse will be stored in enclosed bins separately from construction and chemical wastes. The general refuse will be delivered to the transfer station, separately from construction and chemical wastes, on a daily basis to reduce odour, pest and litter impacts.	Whole site	During construction	√
S8.5	S6	Recycling bins will be provided at strategic locations to facilitate recovery of aluminium can and waste paper from the Site. Materials recovered will be sold for recycling.	Whole site	During construction and operation	√
S8.5	S6	<u>Staff Training</u> At the commencement of the construction works, training will be provided to workers on the concepts of site cleanliness and on appropriate waste management procedures, including waste reduction, reuse and recycling.	Whole site	Commencement of construction	√
S8.7	S6.1 & 6.3	Monthly audits of the waste management practices will be carried out during the construction phases to determine if wastes are being managed in accordance with the recommended good site practices. The audits will examine all aspects of waste management including waste generation, storage, recycling, transport and disposal.	Whole site	During construction	√

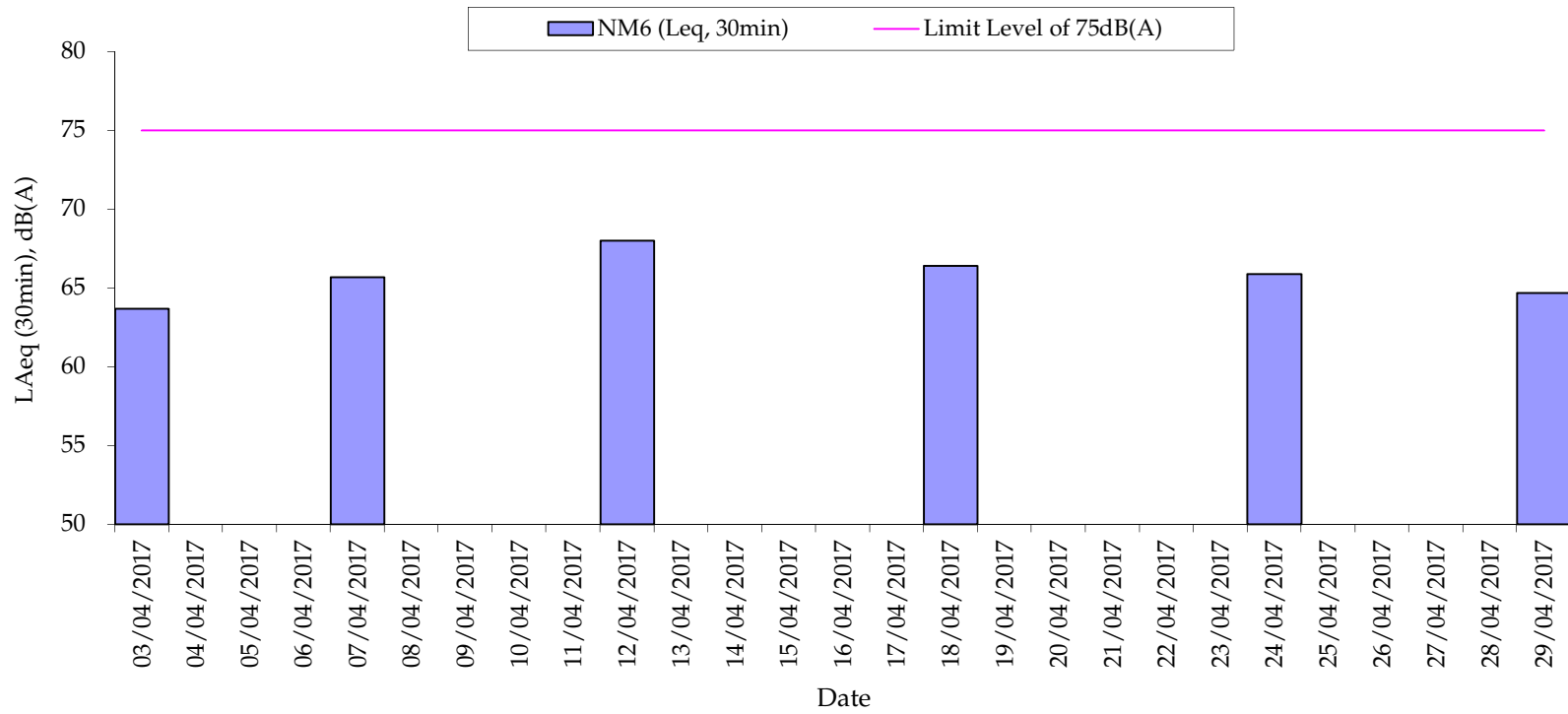
Remark:

- √ Compliance of Mitigation Measures
- <> Compliance of Mitigation but need improvement
- x Non-compliance of Mitigation Measures
- ▲ Non-compliance of Mitigation Measures but rectified by Gammon Construction Ltd
- △ Deficiency of Mitigation Measures but rectified by Gammon Construction Ltd
- N/A Not Applicable in Reporting Period

Annex H

Noise Monitoring Results

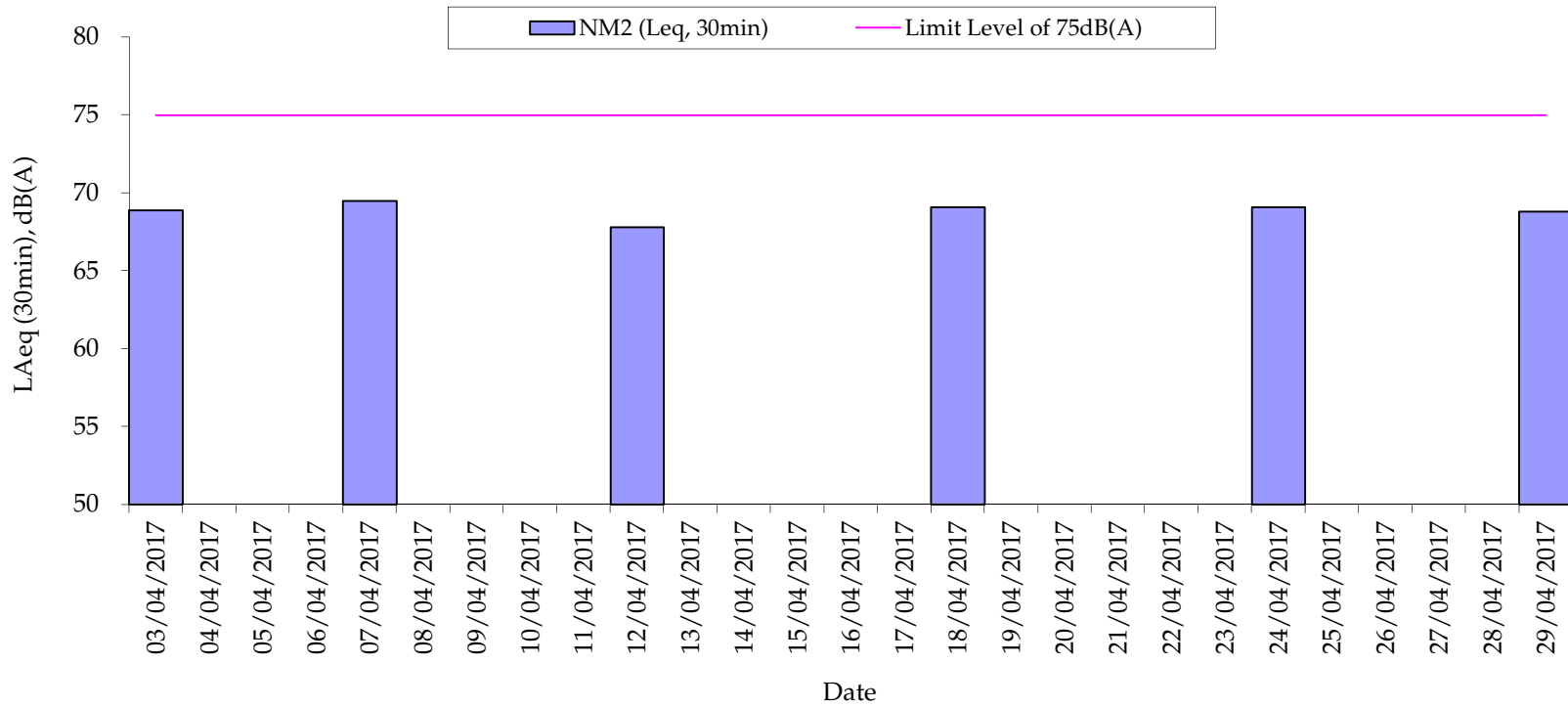
Normal Weekdays Noise Monitoring Results at NM6 - Chancery Mansion (Leq, 30min)



Remark:

- 75dB(A) was adopted as the Limit Level during normal weekdays in the reporting period

Normal Weekdays Noise Monitoring Results at NM2 - Ho Fook Building (Leq, 30min)



Remark:

- 75dB(A) was adopted as the Limit Level during normal weekdays in the reporting period

Annex I

Construction Programme for the Project

Activity ID	Activity Description	Orig Dur	Start Date	Finish Date	2017												2018		
					APR	MAY	JUN	JUL	AUG	SEP	OCT	NOV	DEC	JAN	FEB	MAR			
CENTRAL POLICE STATION																			
BLOCK 1 - POLICE HEADQUARTERS																			
SB01-0010	BLOCK 1 - FACADE WORK	201*	21JUL16A	06FEB17A															
SB01-0020	BLOCK 1 - FINISHES & E/M INCL TEMP SITE OFFICE	384*	21JUL16A	08AUG17															
BLOCK 2 - ARMOURY & STORE																			
SB02-0010	BLOCK 2 - FACADE WORK	36*	21OCT16A	25NOV16A															
SB02-0020	BLOCK 2 - FINISHES & E/M WORK	245*	21JUL16A	22MAR17A															
BLOCK 3 - BARRACK BLOCK																			
SB03-0010	BLOCK 3 - FACADE WORK	249*	21SEP16A	27MAY17															
SB03-0020	BLOCK 3 - FINISHES, E/M WORK & PART FLOOR STRAP	229*	05DEC16A	21JUL17															
SB03-0030	BLOCK 3 - 2/F FLOOR STRAP	73*	05AUG17	16OCT17															
BLOCK 6 - DORMITORY BLOCK C																			
SB06-0010	BLOCK 6 - FACADE WORK	33*	01NOV16A	03DEC16A															
SB06-0020	BLOCK 6 - FINISHES & E/M WORK	302*	09AUG16A	06JUN17															
BLOCK 7 - DORMITORY BLOCK D																			
SB07-0010	BLOCK 7 - FINISHES & E/M WORK	302*	09AUG16A	06JUN17															
BLOCK 8 - ABLUTIONS BLOCK																			
SB08-0010	BLOCK 8 - FACADE WORK	178*	24NOV16A	20MAY17															
SB08-0020	BLOCK 8 - FINISHES & E/M WORK	270*	07OCT16A	03JUL17															
BLOCK 9 - CENTRAL MAGISTRACY																			
SB09-0010	BLOCK 9 - FACADE WORK INCL SOUTH ELEVATION	406*	25AUG16A	04OCT17															
SB09-0020	BLOCK 9 - FINISHES & E/M WORK	401*	25AUG16A	29SEP17															
SB09-0030	BLK 9-COURT RM/ CANOPY STRENGTHEN & REINSTATEMENT	223*	26MAY17	03JAN18															
BLOCK 10 - SUPERINTENDENTS HOUSE																			
SB10-0010	BLOCK 10 - FACADE WORK INCL BALCONY REPAIR	398*	06OCT16A	07NOV17															
SB10-0020	BLOCK 10 - FINISHES & E/M WORK INCL FLOOR STRAP	387*	04OCT16A	25OCT17															
BLOCK 11 - A HALL																			
SB11-0010	BLOCK 11 - FACADE WORK	219*	07OCT16A	13MAY17															
SB11-0020	BLOCK 11 - FINISHES & E/M WORK	233*	24NOV16A	14JUL17															
BLOCK 12 - B HALL																			
SB12-0010	BLOCK 12 - FACADE WORK	376*	14JUL16A	24JUL17															
SB12-0020	BLOCK 12 - FINISHES & E/M WORK	365*	14JUL16A	13JUL17															
BLOCK 13 - C HALL																			
SB13-0010	BLOCK 13 - FACADE WORK INCL CANOPY REMOVAL	257*	06OCT16A	19JUN17															
SB13-0020	BLOCK 13 - FINISHES & E/M WORK	262*	06OCT16A	24JUN17															
BLOCK 14 - D HALL																			
SB14-0010	BLOCK 14 - FACADE WORK	281*	21SEP16A	28JUN17															
SB14-0020	BLOCK 14 - FINISHES & E/M WORK INC CROSS BRACING	290*	21SEP16A	07JUL17															
BLOCK 15 - E HALL																			
SB15-0010	BLOCK 15 - FACADE WORK	244*	04JUL16A	04MAR17A															
SB15-0020	BLOCK 15 - FINISHES & E/M WORK	356*	04JUL16A	24JUN17															
BLOCK 17 - F HALL																			
SB17-0010	BLOCK 17 - FACADE WORK INC EXT WINDOW TOP RAIL	310*	21JUL16A	26MAY17															
SB17-0020	BLOCK 17 - FINISHES & E/M WORK	335*	21JUL16A	20JUN17															
BLOCK 19 - BAUHINIA HOUSE																			
SB19-0010	BLOCK 19 - FINISHES & E/M WORK	195*	11NOV16A	24MAY17															
BLOCK 50 OLD BAILEY WING																			
SB50-0010	OBW FINISHES & E/M WORK INC R54	416*	20JUN16A	09AUG17															

Start Date	07JUL10
Finish Date	09AUG18
Data Date	27APR17
Run Date	04MAY17 13:04

	Early Bar
	Progress Bar

7D02

**CENTRAL POLICE STATION
CONSERVATION AND REVITALIZATION**

**SUMMARY PROGRAMME TO COMPLETION REV 7B
(EXCL BLOCK 4)**

(WITH PROGRESS AS OF 27 APRIL 2017)

Sheet 1 of 2



GCL/P/J3416/SUM/CP07B			
Date	Revision	Checked	Approved

Activity ID	Activity Description	Orig Dur	Start Date	Finish Date	2017												2018		
					APR	MAY	JUN	JUL	AUG	SEP	OCT	NOV	DEC	JAN	FEB	MAR			
BLOCK 51 ARBUTHNOT WING																			
SB51-0010	AW - FINISHES & E/M WORK	379*	20JUN16A	03JUL17															
EXTERNAL WORKS																			
SBEW-0010	EXTERNAL WORK (INCL BLK 4 PROTECTIVE PLATFORM)	543*	04JUL16A	28DEC17															
STATUTORY INSPECT & HANDOVER (EXCL BLK 09 & 10)																			
SBST-0010	SUBMIT BA13 & BA14	0		21JUL17															
SBST-0020	BD INSPECTION	14*	22JUL17	04AUG17															
SBST-0030	ISSUE OP & BA14 ACKNOWLEDGEMENT	0		04AUG17															
SBST-0040	HANDOVER FOR PC	27*	22JUL17	17AUG17															
SBST-0050	PRACTICAL COMPLETION	0		17AUG17															
STATUTORY INSPECTIONS & HANDOVER (BLK 10)																			
SBST-0170	SUBMIT BA14	0		03NOV17															
SBST-0180	BD INSPECTION	28*	04NOV17	01DEC17															
SBST-0190	ISSUE BA14 ACKNOWLEDGEMENT	0		01DEC17															
SBST-0200	HANDOVER FOR PC	28*	04NOV17	01DEC17															
SBST-0210	PRACTICAL COMPLETION	0		01DEC17															
STATUTORY INSPECTIONS & HANDOVER (BLK 9)																			
SBST-0110	SUBMIT BA14	0		14DEC17															
SBST-0120	BD INSPECTION	28*	15DEC17	11JAN18															
SBST-0130	ISSUE BA14 ACKNOWLEDGEMENT	0		11JAN18															
SBST-0140	HANDOVER FOR PC	28*	15DEC17	11JAN18															
SBST-0150	PRACTICAL COMPLETION	0		11JAN18															

Start Date 07JUL10
 Finish Date 09AUG18
 Data Date 27APR17
 Run Date 04MAY17 13:04



7D02

**CENTRAL POLICE STATION
 CONSERVATION AND REVITALIZATION**

**SUMMARY PROGRAMME TO COMPLETION REV 7B
 (EXCL BLOCK 4)**

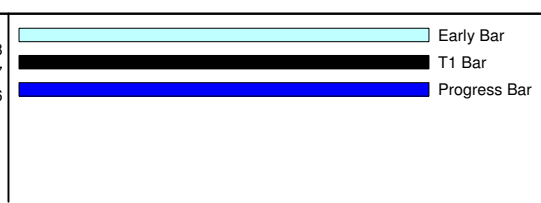
(WITH PROGRESS AS OF 27 APRIL 2017)



GCL/P/J3416/SUM/CP07B			
Date	Revision	Checked	Approved

Activity ID	Activity Description	Dur	Start Date	Finish Date	SA Programme Start	SA Programme Finish	% Comp	Last Update 30MARCH2017 % Comp	2016												2017												2018											
									O	N	D	J	F	M	A	M	J	J	A	S	O	N	D	J	F	M	A	M	J	J	A	S	O	N	D	J	F	M	A	M	J	J	A	S
MANAGEMENT CONTRACT / ON-SITE WORKS																																												
SITE WORKS																																												
Proposed New Footbridge																																												
WP401 - Footbridge Piling & Pile Cap																																												
F2300105	Footbridge const'n - piling, ELS & pile cap	630*	05OCT15A	25JUN17	26JUL15	20JUL16	91	86	Footbridge const'n - piling, ELS & pile cap																																			
F2300125	STAGE 1 - PILING & PILE TEST	583*	05OCT15A	09MAY17	26JUL15	17APR16	98	91	STAGE 1 - PILING & PILE TEST																																			
F2300135	STAGE 2 - PILE CAP CONSTRUCTION	40*	10MAY17	18JUN17	18APR16	01JUN16	0	0	STAGE 2 - PILE CAP CONSTRUCTION																																			
F2300145	STAGE 3 - ROADWORK REINSTATEMENT	7*	19JUN17	25JUN17	02JUN16	20JUL16	0	0	STAGE 3 - ROADWORK REINSTATEMENT																																			
WP402 - Footbridge Superstructure																																												
F2300108	Footbridge cont'n - site access	0	26JUN17		21JUL16		0	0	Footbridge cont'n - site access																																			
F2300110	Footbridge cont'n-Pier, bridge deck&Finish/E&M	223*	26JUN17	03FEB18	21JUL16	26APR17	0	0	Footbridge cont'n-Pier, bridge deck&Finish/E&M																																			
F2300155	Footbridge cont'n - Pier & bridge deck structure	130*	26JUN17	02NOV17	21JUL16	27NOV16	0	0	Footbridge cont'n - Pier & bridge deck structure																																			
F2300165	Footbridge cont'n - Finishes & E/M & inspection	93*	03NOV17	03FEB18	28NOV16	26APR17	0	0	Footbridge cont'n - Finishes & E/M & inspection																																			
Design & WP Contractors Procurement																																												
F2301840	Superstruct WP - Mobilise/Lead time to commence	150	17MAR16A	20MAY17	30DEC15	27MAY16	84	65	Superstruct WP - Mobilise/Lead time to commence																																			
BD Submission & Approval																																												
F2301860	Superstructure	60	22MAR17A	20MAY17			60	13	Superstructure																																			
Construction - Foundation																																												
Load Test - Shear H Pile (zone B)																																												
F2302061A	BA10 Notice Period Completed for ELS	0		16MAR17A			100	100	BA10 Notice Period Completed for ELS																																			
F2302061B	GEO comment- additional monitoring point	0		22MAR17A			100	100	GEO comment- additional monitoring point																																			
F2302061C	GEO comment- pile load test requirements	0		28MAR17A			100	100	GEO comment- pile load test requirements																																			
F2302064F	Planking suspended after GEO visit on 31OCT2016	0		31OCT16A			100	100	Planking suspended after GEO visit on 31OCT2016																																			
F2302064G	Explore alternative ELS / planking method	17	01NOV16A	17NOV16A			100	100	Explore alternative ELS / planking method																																			
F2302065A	Resubmit ELS/planking drawing to BD for approval	30	25NOV16A	16DEC16A			100	100	Resubmit ELS/planking drawing to BD for approval(withdrew on 16Dec2016)																																			
F2302065B	Withdraw ELS/planking BD resubmission	0		16DEC16A			100	100	Withdraw ELS/planking BD resubmission																																			
F2302070	Prepare & submit test report - shear H pile	11	14APR17A	20APR17A	05FEB16	18FEB16	100	0	Prepare & submit test report - shear H pile																																			
F2302160	Submit BA8 for ELS consent	28	15FEB17A	14MAR17A			100	100	Submit BA8 for ELS consent																																			
General																																												
F2302080	BD acknowledgement	28	11APR17A	09MAY17	21MAR16	17APR16	54	0	BD acknowledgement																																			
F2302090	Apply pile cap consent	28	11APR17A	09MAY17	21MAR16	17APR16	54	0	Apply pile cap consent																																			
F2302110	Apply superstructure consent	30	21MAY17	19JUN17	23JUN16	13JUL16	0	0	Apply superstructure consent																																			
Construction - Structure, Finishes & E/M																																												
F2302094	Exc pile caps (zone A) Part 1	46	12DEC16A	05JAN17A			100	100	Exc pile caps (zone A) Part 1																																			
F2302094C	Exc pile cap (zone A) Part 2	20	21FEB17A	07MAR17A			100	100	Exc pile cap (zone A) Part 2																																			
F2302100	Construct pile cap	40	10MAY17	18JUN17	18APR16	01JUN16	0	0	Construct pile cap																																			
F2302120	Backfilling of excavated area	7	19JUN17	25JUN17	14JUL16	20JUL16	0	0	Backfilling of excavated area																																			
F2302130	Erection of temporary steel decking	70	26JUN17	03SEP17	21JUL16	28SEP16	0	0	Erection of temporary steel decking																																			
F2302200	Pier Construction	56	10JUL17	03SEP17	04AUG16	28SEP16	0	0	Pier Construction																																			
F2302300	Footbridge Structure	60	04SEP17	02NOV17	29SEP16	27NOV16	0	0	Footbridge Structure																																			
F2302310	Ex Central escalator modification work	45	04SEP17	18OCT17			0	0	Ex Central escalator modification work																																			
F2302400	Finishes & E&M	58	03NOV17	30DEC17	28NOV16	25FEB17	0	0	Finishes & E&M(assume no needle gun finishes)																																			
F2302403	Curing	28	03NOV17	30NOV17			0	0	Curing																																			
F2302405	Dismantle of temporary steel decking	30	01DEC17	30DEC17	26DEC16	24JAN17	0	0	Dismantle of temporary steel decking																																			
F2302410	Footpath refurbishment work	30	16DEC17	14JAN18	10JAN17	08FEB17	0	0	Footpath refurbishment work																																			
F2302500	Statutory Inspection	35	31DEC17	03FEB18	26FEB17	26APR17	0	0	Statutory Inspection(period reviewed & reduced)																																			
F2302510	Remaining roadworks at street level	30	15JAN18	13FEB18			0	0	Remaining roadworks at street level																																			

Start Date 01JUL11
Finish Date 13FEB18
Data Date 27APR17
Run Date 02MAY17 09:36



F7D2
**CENTRAL POLICE STATION
CONSERVATION AND REVITALIZATION
TARGET CONSTRUCTION PROGRAMME FOR
FOOTBRIDGE**
(WITH PROGRESS AS OF 27 APR 2017)
(WITH OBJECTION FROM PUBLIC)



GCL / P / J3416 / CP06A (Footbridge)			
Date	Revision	Checked	Approved
25MAR14	assume no objection from public		
28APR14	amend to account for public objections to Gazet		
22FEB16	programme reviewed		
23FEB16	revised to include comments		
14NOV16	revised to cater for Zone B planking		
17NOV16	revised after meeting on 17Nov2016		

Annex J

Tree Inspection Reports

R38871



欣榮 (香港) 環境管理有限公司

Yan Wing (Hong Kong) Environment Management Limited

香港 新界 沙頭角 新樓街 15 號 二樓
No. 15, San Lau Street, 1/F., Sha Tau Kok, N.T., Hong Kong

Tel : 9776 1987, 2486 2317 Fax : 2482 4667 E-mail : yanwinghk@netvigator.com

Our Ref. : YW/TP/GAMMON/2017/4/1

3rd May 2017

Gammon Construction Limited
28/F Devon House,
TaiKoo Place 979 King's Road
Hong Kong

Tel. 2516 8823
Fax. 2516 6260

Attn : Mr. Cliff C.H. LEUNG, Ms. Oley C.T. WONG,

Dear Madam/Sir,

**Summary of Monthly Inspection Report for the Six Existing Trees
at Central Police Station Compound for April 2017
(Contract Ref. : J3416/400.4/D00025)**

Tree No.	Botanical Name	Date of Inspection	Overall Health Condition Good/Fair/Poor	Remarks
Tree-5	<i>Mangifera indica</i> 芒果	7 th Apr. 2017	Fair	1. Keep monitoring on the growth of the tree.
Tree-6	<i>Aleurites moluccana</i> 石栗	7 th Apr. 2017	Fair	1. No further action is required.
Tree-7	<i>Aleurites moluccana</i> 石栗	7 th Apr. 2017	Fair	1. No further action is required.
Tree-8	<i>Plumeria rubra</i> 紅雞蛋花	7 th Apr. 2017	Fair	1. No further action is required.
Tree-9	<i>Araucaria cunninghamia</i> 花旗杉	7 th Apr. 2017	Fair	1. No further action is required.
Tree-11	<i>Dracaena marginata</i> 馬尾鐵	7 th Apr. 2017	Fair	1. Keep monitoring on the growth of the tree.





欣榮(香港)環境管理有限公司

Yan Wing (Hong Kong) Environment Management Limited

香港 新界 沙頭角 新樓街 15 號 二樓

No. 15, San Lau Street, 1/F., Sha Tau Kok, N.T., Hong Kong

Tel : 9776 1987, 2486 2317 Fax : 2482 4667 E-mail : yanwinghk@netvigator.com

Tree Inspection Reports and Tree Group Inspection Form (Form 1) are attached for your reference and record, please.

I should be much grateful if you could endorse the attached Invoice (No.1124) and fax it to my Office at 2482 4667. Thank you.

Yours faithfully

For and on behalf of
Yan Wing (HK) Environment Management Ltd.

(WONG Pak Hay)
Contract Manager



FORM 1: TREE GROUP INSPECTION FORM

表格 1: 樹群檢查表格

General Information 基本資料

Company 公司:	Gammon Construction Ltd	Name of Tree Inspection officer 巡查人員姓名:	LAU Man Chung
File Ref. 檔案編號:	YW/TP/GAMMON/2017/4/2	Name of Endorsement Officer 覆核人員姓名:	WONG Pak Hay
Date of Inspection 巡查日期:	April 7, 2017		
Project/Contract No. 合約/工程編號:	J3416/400.4/D00025		

Location Information 位置資料

Location 地點:	Central Police Station Compound.	Nearby Utility Post No. 就近公用設施編號:	
Location Types 地點類別: Address: __ (multiple answers allowed) 可選多於一項	<input type="checkbox"/> Roadside 路旁 <input checked="" type="checkbox"/> Open space 空地 <input type="checkbox"/> Exhibition Centre 展覽中心 <input type="checkbox"/> View Point 觀景台 <input type="checkbox"/> Walking / nature trail 行山徑 / 自然徑 <input type="checkbox"/> Others (please specify) 其他 (請說明): _____	<input type="checkbox"/> Community Hall / Centre 社區會堂 / 中心 <input type="checkbox"/> Roadside Planter 路旁花園 <input type="checkbox"/> Rain shelter / pavilion 避雨亭 / 涼亭 <input type="checkbox"/> Sitting out area 休憩處	

General Tree Information 基本樹木資料

* Delete as appropriate 請把不合適的刪除

Main tree species in the group or minority tree species of significant size 在群組內的主要樹種或樹幹胸徑或高度或樹冠範圍較大的樹種 (Note 2)	Approx. number of trees in the relevant species or as a % of tree group 該樹種在群組內的百分比/數目*	Range of tree height (m) 該樹種高度範圍	Overall health condition 整體健康狀況 (good, fair, poor 好, 良, 差)	Overall structural condition 整體結構狀況 (good, fair, poor 好, 良, 差)	Other remarks (Any special tree condition, e.g. dying/dead, pest/disease problem and structural defects; and soil condition 其他評語 (樹木狀況例如: 凋謝/枯樹/病蟲害或結構問題; 及泥土狀況)
<i>Mangifera indica</i> 芒果	17%, 1 No.	16M	FAIR	FAIR	Keep monitoring on the growth of the tree
<i>Aleurites moluccana</i> 石栗	32% 2 Nos.	10-13M	FAIR	FAIR	No further action is required...
<i>Plumeria rubra</i> 紅雞蛋花	17% 1 No.	7M	FAIR	FAIR	No further action is required...
<i>Araucaria cunninghamia</i> 花旗杉	17% 1 No.	13M	FAIR	FAIR	No further action is required..
<i>Dracaena marginata</i> 馬尾鐵	17% 1 No.	8M	FAIR	FAIR	Keep monitoring on the growth of the tree

Target 目標

TARGET (people or property potentially affected by tree/branch failure) 目標 (因樹木倒塌或枝條斷裂而受影響的人或財產)
Does target exist? 目標是否存在? <input checked="" type="checkbox"/> Yes 是 <input type="checkbox"/> No 否
Can target be moved? 能否移除目標? <input type="checkbox"/> Yes 是 <input checked="" type="checkbox"/> No 否
Can the use of site be restricted? 可否限制場地的使用? <input checked="" type="checkbox"/> Yes 是 <input type="checkbox"/> No 否
Frequency of use of location 使用該地點的頻密程度: <input type="checkbox"/> Occasional use 偶爾使用 <input type="checkbox"/> Intermittent use 間歇使用 <input checked="" type="checkbox"/> Frequent use 經常使用 <input type="checkbox"/> Constant use 恆常使用

Identification of Trees for Remedial Action or Detailed Tree Risk Assessment

識別下述樹木，以便採取風險緩減措施或進行詳細樹木風險評估

Trees falling under the following criteria 樹木屬於以下任何一項或多於一項類別	Number of trees 樹木數量	Remedial action or detailed tree risk assessment 緩減措施或進行詳細樹木風險評估
(1) Trees on complaint list with structural or health problems 投訴個案中，結構或健康問題的樹木 (Note 1)	Nil	
(2) Mature trees belonging to species with brittle wood structure and having unsatisfactory health or structural conditions with failure potential 屬木質脆弱品種並已達成熟期及有倒塌風險的樹木 (Note 1)	Nil	
(3) Tree with major defects or health problems 有明顯缺陷或健康問題的樹木 (Note 1)	Nil	
(4) Trees growing in very stressful site conditions with failure potential 生長於非常擠壓環境而有倒塌風險的樹木 (Note 1)	Nil	



Signature of Tree Inspection Officer :
Signature of Endorsement Officer:

Name of Contractor

Date:





Yan Wing (HK) Environment Management Ltd.

30-4-2017



- Note 1: If remedial action (such as pruning) undertaken cannot mitigate the potential risk of tree or branch failure, detailed tree risk assessment (using Form 2) should be carried out.
備註 1: 若風險緩減措施(如枝幹修剪)仍未能解決倒塌或枝條斷裂的潛在風險，應為該樹進行詳細的樹木風險評估(表格 2)。
- Note 2: Please read in conjunction with TMO's Guidelines on Tree Risk Assessment and Management Arrangement (Para. 4.3. refers.)
備註 2: 請參閱樹木管理辦事處的樹木風險評估安排及管理指引(第 4.3 節)

**Inspection Report for the 6 Existing Trees
at Central Police Station Compound
(Contract Ref. : J3416/400.4/D00025)**

I. TREE NUMBER : Tree-5 *Mangifera indica* 芒果

II. BASIC INFORMATION :

Height (m)	16m	Crown spread (m)	18m
DBH (mm)	1000mm	Overall Health Condition Good/Fair/Poor	Fair
Date of Inspection	7 th April 2017	Last Inspection Date	15 th March 2017

III. COMMENTS :

1. Overall health condition of the tree is fair.
2. Many fresh flowers appear on the tree.
3. The crown is full of vigorous and green leaves.
4. The site near the tree is clean and tidy.

IV. RECOMMENDATIONS :

As the top soil has been backfilled at the planter by December 2016, we recommend to keep monitoring on the growth of the tree in the coming months.

V. PHOTO RECORD :



Fig 2. The root collar is normal. The planter is covered with small pieces of pine bark.



Fig. 3 Health condition of the lower trunk is fair.



Fig. 4 Health condition of the mid trunk is fair.



Fig. 5 Health condition of the upper trunk also is fair.



Fig. 6 The crown is full of vigorous and green leaves.



Fig. 7 Vigorous and green leaves also appear on the lower branches.



Fig. 8 Many flowers appear on the tree.



Fig. 9 Topsoil has been backfilled at the planter by December 2016.



Fig. 10 The site near Tree-5 is clean and tidy.



Fig. 11 The access near Tree-5 also is clean and tidy.



Fig. 12 Overall view of Tree-5 during inspection on 7th April 2017.



Signature of Inspection Officer :
(Mr. LAU Man-chung, ISA CA-HK0050A)

Signature of Endorsement Officer :
(Mr. WONG Pak-hay, Contract Manager)

Name of Contractor :

Dated this :





Yan Wing (HK) Environment
Management Ltd.

30th April 2017



**Inspection Report for the 6 Existing Trees
at Central Police Station Compound
(Contract Ref. : J3416/400.4/D00025)**

I. TREE NUMBER : Tree-6 *Aleurites moluccana* 石栗

II. BASIC INFORMATION :

Height (m)	10m	Crown spread (m)	10m
DBH (mm)	510mm	Overall Health Condition Good/Fair/Poor	Fair
Date of Inspection	7 th April 2017	Last Inspection Date	15 th March 2017

III. COMMENTS :

1. Overall health condition of the tree is fair.
2. The crown is full of vigorous and green leaves.
3. The planter is under repair.
4. The access near Tree-6 is clean and tidy.

IV. RECOMMENDATIONS :

1. No further action is required.

V. PHOTO RECORD :



Fig 2. Root collar is normal. The planter is covered with mulch and dry leaves.



Fig 3. Health condition of the lower trunk is fair.



Fig. 4 Health condition of the mid trunk is fair.



Fig. 5 Health condition of the upper trunk also is fair.



Fig. 6 The crown is full of vigorous and green leaves.



Fig. 7 Vigorous and green leaves also are growing on the lower branches.



Fig. 8 Faded leaves still appear on the tree due to continuous dry weather.



Fig. 9 The planter is under repair at the time of inspection.



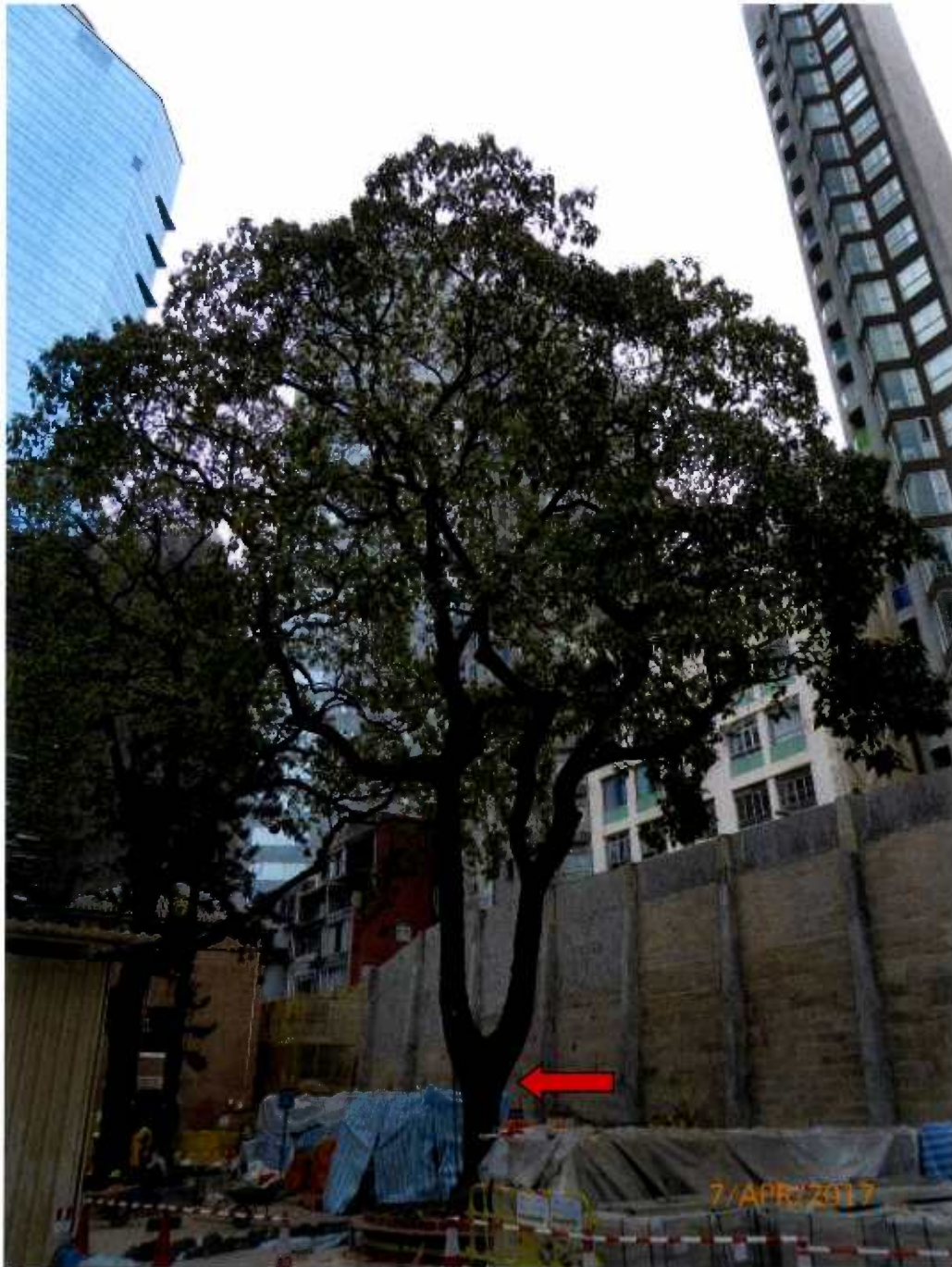
Fig. 10 Many construction materials are placed near Tree-6.



Fig. 11 The access near the planter is clean and tidy.



Fig. 12 Overall view of Tree-6 during inspection on 7th April 2017.



Signature of Inspection Officer :
(Mr. LAU Man-chung, ISA CA-HK0050A)

Signature of Endorsement Officer :
(Mr. WONG Pak-hay, Contract Manager)

Name of Contractor :

Dated this :



Yan Wing (HK) Environment
Management Ltd.

30th April 2017



**Inspection Report for the 6 Existing Trees
at Central Police Station Compound
(Contract Ref. : J3416/400.4/D00025)**

I. TREE NUMBER : Tree-7 *Aleurites moluccana* 石栗

II. BASIC INFORMATION :

Height (m)	13m	Crown spread (m)	12m
DBH (mm)	650mm	Overall Health Condition Good/Fair/Poor	Fair
Date of Inspection	7 th April 2017	Last Inspection Date	15 th March 2017

III. COMMENTS :

1. Overall health condition of the tree is fair.
2. The crown is full of vigorous and green leaves.
3. The planter is under repair.
4. The site near Tree-7 appears clean and tidy.

IV. RECOMMENDATIONS :

1. No further action is required.

V. PHOTO RECORD :

Fig 1. Tree number



Fig 2. Root collar is normal.



Fig 3. Health condition of the lower trunk is fair.



Fig. 4 Health condition of the mid trunk is fair.



Fig. 5 Health condition of the upper trunk also is fair.

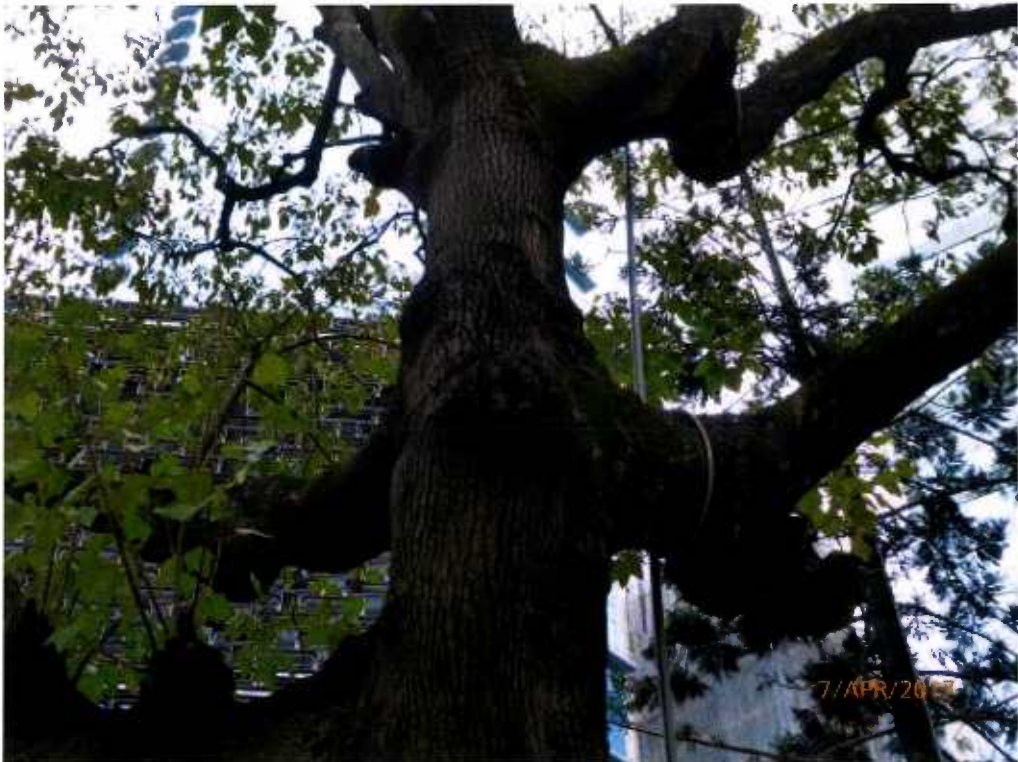


Fig. 6 The crown is full of vigorous and green leaves.



Fig. 7 Vigorous and green leaves also appear on the lower branches.



Fig. 8 Faded leaves still appear on the tree due to continuous dry weather.



Fig. 9 Signs of Pest (Mealy Bugs 粉狀介殼蟲) are rarely found on Tree-7 due to Pest Control Operation on 25th April 2016.



Fig. 10 The planter is under repair at the time of inspection.



Fig. 11 The site near the tree is clean and tidy.



Fig. 12 Overall view of Tree-7 during inspection on 7th April 2017.




Signature of Inspection Officer :
(Mr. Lau Man-chung, ISA CA-HK0045A)

Signature of Endorsement Officer :
(Mr. WONG Pak-hay, Contract Manager)

Name of Contractor :

Dated this :



Yan Wing (HK) Environment
Management Ltd.

30th April 2017



**Inspection Report for the 6 Existing Trees
at Central Police Station Compound
(Contract Ref. : J3416/400.4/D00025)**

I. TREE NUMBER : Tree-8 *Plumeria rubra* 紅雞蛋花

II. BASIC INFORMATION :

Height (m)	7m	Crown spread (m)	9m
DBH (mm)	430mm	Overall Health Condition Good/Fair/Poor	Fair
Date of Inspection	7 th April 2017	Last Inspection Date	15 th March 2017

III. COMMENTS :

1. Overall health condition of the tree is fair.
2. Root collar is normal.
3. Leaves become sparse on the tree.
4. The access near Tree-8 is clean and tidy.

IV. RECOMMENDATIONS :

1. No further action is required.

V. PHOTO RECORD :



Fig 2. Root collar is normal.



Fig. 3 Health condition of the lower trunk is fair.



Fig. 4 Health condition of the mid trunk is fair.



Fig. 5 Health condition of the upper trunk is fair..



Fig. 6 Leaves on Tree-8 become sparse due to dry seasons.



Fig. 7 The planter is under repair.



Fig. 8 The planter is under repair.



Fig. 9 The access near the tree is clean and tidy.



Fig. 10 Overall view of Tree-8 during inspection on 7th April 2017.



Signature of Inspection Officer :
(Mr. LAU Man-chung, ISA CA-HK0050A)

Signature of Endorsement Officer :
(Mr. WONG Pak-hay, Contract Manager)

Name of Contractor :

Dated this :





Yan Wing (HK) Environment
Management Ltd.

30th April 2017



**Inspection Report for the 6 Existing Trees
at Central Police Station Compound
(Contract Ref. : J3416/400.4/D00025)**

I. TREE NUMBER : Tree - 9 *Araucaria cunninghamia* 花旗杉

II. BASIC INFORMATION :

Height (m)	13m	Crown spread (m)	5m
DBH (mm)	230mm	Overall Health Condition Good/Fair/Poor	Fair
Date of Inspection	7 th April 2017	Last Inspection Date	15 th March 2017

III. COMMENTS :

1. Overall health condition of the tree is fair.
2. Root collar is normal. The planter is covered with mulch and leaves.
3. Vigorous and green leaves appear on the tree.
4. The site near Tree-9 is clean and tidy.

IV. RECOMMENDATIONS :

1. No further action is required.

V. PHOTO RECORD :



Fig 2. Root collar is normal. The planter is covered with mulch and leaves.



Fig. 3 Health condition of the lower trunk is fair.



Fig. 4 Health condition of the mid trunk is fair.



Fig. 5 Health condition of the upper trunk also is fair.



Fig. 6 The crown is full of vigorous and green leaves.



Fig. 7 Vigorous and green leaves also are growing on the lower branches.



Fig. 8 The fresh fruit still appears on the tree.



Fig. 9 The planter is under repair.



Fig. 10 Many construction materials are placed near the tree.



Fig. 11 The site near the tree appears clean and tidy.

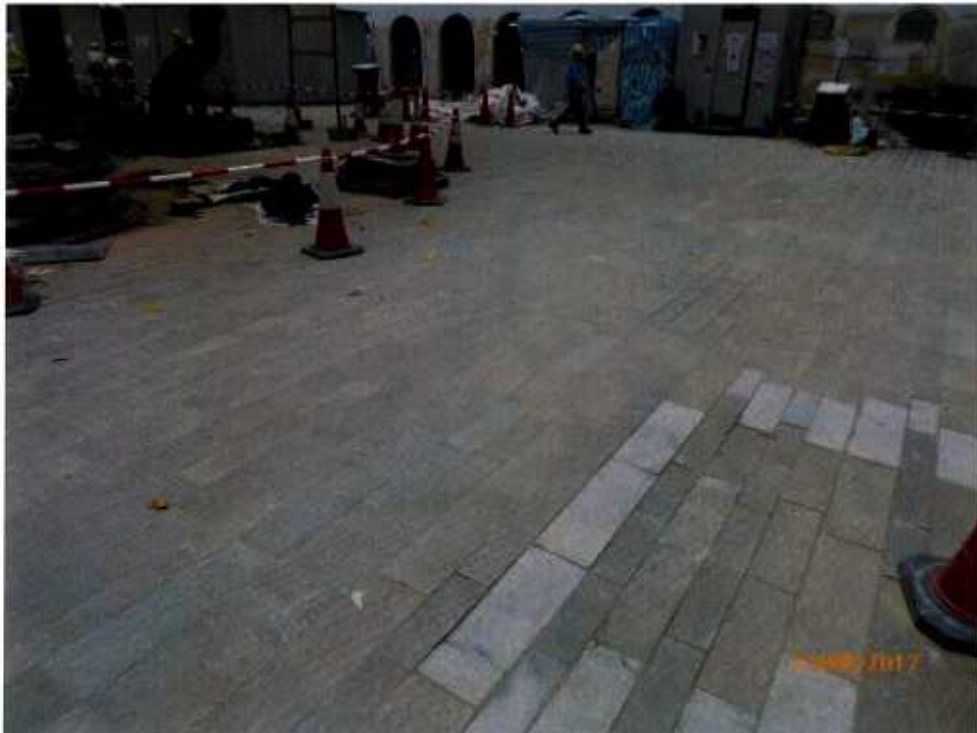


Fig. 12 Overall view of Tree-9 during inspection on 7th April 2017.

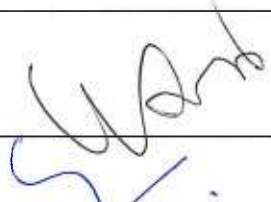


Signature of Inspection Officer :
(Mr. LAU Man-chung, ISA CA-HK0050A)

Signature of Endorsement Officer :
(Mr. WONG Pak-hay, Contract Manager)

Name of Contractor :

Dated this :



Yan Wing (HK) Environment
Management Ltd.

30th April 2017



**Inspection Report for the 6 Existing Trees
at Central Police Station Compound
(Contract Ref. : J3416/400.4/D00025)**

I. TREE NUMBER : Tree -11 *Dracaena marginata* 馬尾鐵

II. BASIC INFORMATION :

Height (m)	8m	Crown spread (m)	2m
DBH (mm)	170mm	Overall Health Condition Good/Fair/Poor	Fair
Date of Inspection	7 th April 2017	Last Inspection Date	15 th March 2017

III. COMMENTS :

1. Health condition of the tree is fair.
2. Root collar is normal, the planter is covered with mulch.
3. Withered leaves still appear on the tree.
4. A large shelter has been erected to protect the tree.

IV. RECOMMENDATIONS :

1. To keep monitoring on the growth of the tree especially when the nearby renovation works are in progress.

V. PHOTO RECORD :



Fig. 2 Root collar is normal. The planter is covered with mulch.



Fig. 3 Health condition of the lower trunk is fair.



Fig. 4 Health condition of the mid trunk is fair.



Fig. 5 Health condition of the upper trunk also is fair.



Fig. 6 Withered leaves still remain on the upper branches..



Fig. 7 Withered leaves also appear on the bottom part of Tree-11.



Fig. 8 A large shelter has been erected to protect the tree.



Fig. 9 Tree protection zone is in order at the time of inspection.



Fig. 10 Renovation works are in progress near Tree-11.



Fig. 11 Renovation works also are in progress on the other side of the tree.



Fig. 12 Overall view of Tree-11 during inspection on 7th April 2017.



Signature of Inspection Officer :
(Mr. LAU Man-chung, ISA CA-HK0050A)

Signature of Endorsement Officer :
(Mr. WONG Pak-hay, Contract Manager)

Name of Contractor :

Dated this :

Yan Wing (HK) Environment
Management Ltd.

30th April 2017



Annex K

Environmental Complaint,
Environmental Summons
and Prosecution Log

Annex K Cumulative Complaint and Summons/Prosecutions Log

Reporting Month	Number of Complaints in Reporting Month	Number of Summons/Prosecutions in Reporting Month
November 2011	0	0
December 2011	0	0
January 2012	0	0
February 2012	0	0
March 2012	4	0
April 2012	0	0
May 2012	0	0
June 2012	2	0
July 2012	1	0
August 2012	0	0
September 2012	0	0
October 2012	0	0
November 2012	2	0
December 2012	0	0
January 2013	0	0
February 2013	1	0
March 2013	1	0
April 2013	0	0

Reporting Month	Number of Complaints in Reporting Month	Number of Summons/Prosecutions in Reporting Month
May 2013	0	0
June 2013	0	0
July 2013	0	0
August 2013	0	0
September 2013	0	0
October 2013	0	0
November 2013	0	0
December 2013	0	0
January 2014	2	0
February 2014	1	0
March 2014	1	0
April 2014	1	0
May 2014	0	0
June 2014	0	0
July 2014	2	0
August 2014	3	0
September 2014	2	0
October 2014	1	0
November 2014	0	0

Reporting Month	Number of Complaints in Reporting Month	Number of Summons/Prosecutions in Reporting Month
December 2014	0	0
January 2015	0	0
February 2015	1	0
March 2015	1	0
April 2015	0	0
May 2015	1	0
June 2015	1	0
July 2015	1	0
August 2015	1	0
September 2015	0	0
October 2015	0	0
November 2015	0	0
December 2015	0	0
January 2016	0	0
February 2016	0	0
March 2016	1	0
April 2016	0	0
May 2016	0	0
June 2016	0	0

Reporting Month	Number of Complaints in Reporting Month	Number of Summons/Prosecutions in Reporting Month
July 2016	0	0
August 2016	0	0
September 2016	1	0
October 2016	0	0
November 2016	0	0
December 2016	0	0
January 2017	0	0
February 2017	0	0
March 2017	0	0
April 2017	0	0
Overall Total	32	0

Annex L

Records of Vibration
Monitoring for Other
Construction Works

Vibration Monitoring Record (April)

	Block 11	
Point	VM11-1	VM11-2
Date	mm/s	mm/s
01-Apr-17	0.104	0.102
02-Apr-17	Sunday	
03-Apr-17	0.109	0.102
04-Apr-17	Holiday	
05-Apr-17	0.103	0.105
06-Apr-17	0.104	0.099
07-Apr-17	0.106	0.104
08-Apr-17	0.108	0.104
09-Apr-17	Sunday	
10-Apr-17	0.111	0.109
11-Apr-17	0.105	0.103
12-Apr-17	0.109	0.102
13-Apr-17	0.104	0.107
14-Apr-17	Holiday	
15-Apr-17	Holiday	
16-Apr-17	Sunday	
17-Apr-17	Holiday	
18-Apr-17	0.100	0.109
19-Apr-17	0.104	0.107
20-Apr-17	0.102	0.104
21-Apr-17	0.100	0.102
22-Apr-17	0.106	0.100
23-Apr-17	Sunday	
24-Apr-17	0.100	0.103
25-Apr-17	0.102	0.112
26-Apr-17	0.100	0.118
27-Apr-17	0.107	0.105
28-Apr-17	0.097	0.109
29-Apr-17	0.106	0.102
30-Apr-17	Sunday	